

LINE DATA TABLE			CURVE DATA TABLE					
LINE	LENGTH	BEARING	CURVE	LENGTH	RADIUS	DELTA ANGLE	CHORD BEARING	CHORD LENGTH
L1	47.06	N89.24.40"W	C1	463.82	2128.66	122.804°	S15.40'21"W	462.91
L2	13.79	S89.24.40"E						

GENERAL NOTES

1. EXISTING ZONING: M-3
2. CURRENT USE: VACANT
3. PROPOSED BY: CONTRACTOR SHOP
TOPOGRAPHIC INFORMATION OBTAINED FROM A TOPOGRAPHIC SURVEY
PERFORMED BY LANDPLAN ENGINEERING, 2003.
4. BUILDING INFORMATION:
PROPOSED: 57,500 GSF TOTAL
USE 1: 8,000 SF
USE 2: 21,000 SF
USE 3: 5,000 SF
USE 4: 1,000 SF
USE 5: 14,700 SF
5. PARKING INFORMATION:
REQUIRED: 1 STALL PER 50 SQ. FT.
(6 EMPLOYEES REQUIRED)
6. PROPOSED: 16 STALLS REQUIRED
46 STALLS REQUIRED FOR ACCESSORY
USE. 10 STALLS TO HAVE CONCRETE CURB
AND GUTTER TO MEET CITY OF LAWRENCE STANDARDS. ASPHALT
PAVEMENT SHALL MEET OR EXCEED CITY OF LAWRENCE
MINIMUM STANDARDS.
7. PROPOSED CONCRETE PAVEMENT TO BE 8" PORTLAND REINFORCED
CONCRETE ON COMPACTED SUBGRADE UNLESS OTHERWISE
SPECIFIED. ALL CURBS SHALL BE 12" HIGH. ALL LIGHTING SHALL
BE MOUNTED LIGHTING SHALL BE LOCATED AT BUILDING
ENTRANCES. ALL LIGHTING SHALL BE SHIELDED TO PREVENT
GLARE OFF-SITE.
8. THE CITY OF LAWRENCE SHALL NOT BE RESPONSIBLE FOR
DAMAGE TO PAVEMENT DUE TO THE WEIGHT OF REFUSE VEHICLES.
THIS SITE PLAN HAS BEEN DESIGNED TO COMPLY WITH THE
CITY OF LAWRENCE'S ZONING ORDINANCE AND THE CITY OF
LAWRENCE'S ACCESSIBILITY GUIDELINES (ADA) FOR BUILDING AND
FACILITIES - APPENDIX A TO 28 CTR PART 3B.
9. ACCESSIBLE SPACES ARE TO BE SIGNED AND STENCILED PER
ORDINANCE 20-1206-F.

LOCATION MAP



LEGAL DESCRIPTION

THAT PART OF LOTS 15 THROUGH 18, AND 23 THROUGH 28, IN ADDITION NO. 1 IN THAT PART OF THE CITY OF LAWRENCE KNOWN AS NORTH LAWRENCE, MORE PARTICULARL DESCRIBED AS FOLLOWS:

LANDSCAPE SCHEDULE

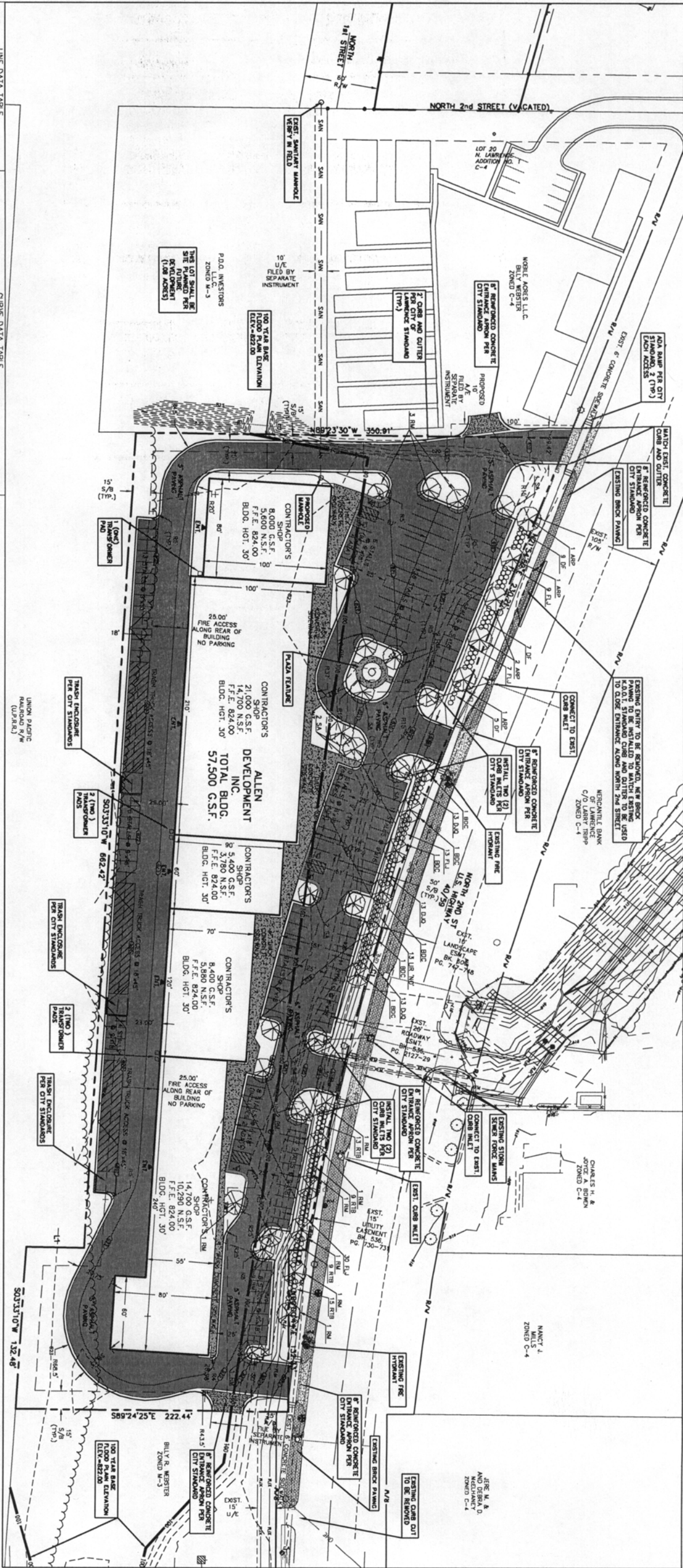
SIXCE TESTS			
803	OPEN KENDO	1 1/2 OLS	MB
18 96	OPEN MAJESTIC	2 OLS	OL
88	83 WHIC	2 1/2 OLS	MB
802	MAI CHINES	2 1/2 OLS	MB
820	POWER FIGHTING CHINE	2 OLS	OL
18 97	OPEN NEW OLIVER	2 OLS	OL
17	TRADING JAPANE	3 OLS	OL
885	ANYONE KICK SPINA	3 OLS	OL
819	83 TRINCEB UNIVERSITY	3 OLS	OL
54	SHARP 604	2 1/2 OLS	MB
899	ANYONE FISH	2 1/2 OLS	MB

SITE SUMMARY

THE DATA WITHIN THE FOLLOWING TABLE REPRESENTS THE PROPOSED TOTAL QUANTITIES IN THE DEVELOPMENT.

Lot 1	Area (Sq. Ft.)	Area (Sq. Ft.)
Existing Buildings	0	Proposed Buildings
Existing Pavement	0	Proposed Pavement
Existing Impervious	0	Proposed Impervious
Existing Pervious	Subtotal:	Subtotal:
Property Area	164,128	Proposed Pervious
	164,128	164,128

24.25" WEST, ALONG SAID SOUTH LINE, 222.44 FEET TO THE POINT OF BEGINNING, THE ABOVE CONTAINS 4.480 ACRES, MORE OR LESS.



**SITE PLAN
NORTH TOWN
BUSINESS PARK
NORTH 2nd STREET (U.S. HIGHWAY 40/59)
LAWRENCE, KANSAS**

Civil Engineering
Landscape Architecture
Community Planning
Surveying

1310 Wakarusa Drive
Lawrence, Kansas 66044
tele (785)643-7530
fax (785)643-2410
email: info@landtolan-pa.com

Livestock Exchange Building
1600 Genessee, Suite 400
Kansas City, Missouri 64102
tele (816)221-2234
fax (816)221-2644
email: kclandtolan@landtolan-pa.com

Landplan Engineering, P.A.




©London Engineering, P.A. 2004. This drawing is copyright by London Engineering, P.A. This drawing may not be photocopied, scanned, or copied in any manner without the written permission of London Engineering, P.A.

REVISIONS

BENCHMARK:
RMBA - A CHISELED CROSS ON TOP OF EAST
CONCRETE HEADWALL OF CULVERT FOR MAPLE
GROVE TRIBUTARY UNDER 3RD STREET.
ELEVATION = 815.97 (NAVD83)

NORTH

SCALE: 1" = 40'



A Site Plan for
**NORTH TOWN
BUSINESS PARK**

Lawrence, Kansas

DATE:	11.17.2001
PROJECT NO.:	2001.044.11
DRAWING ID:	0144.15-AP-01
DESIGNED BY:	C.L.M.
DRAWN BY:	B.R.M.
CHECKED BY:	C.L.M.

SHEET NO. 1 OF 1 SHEETS