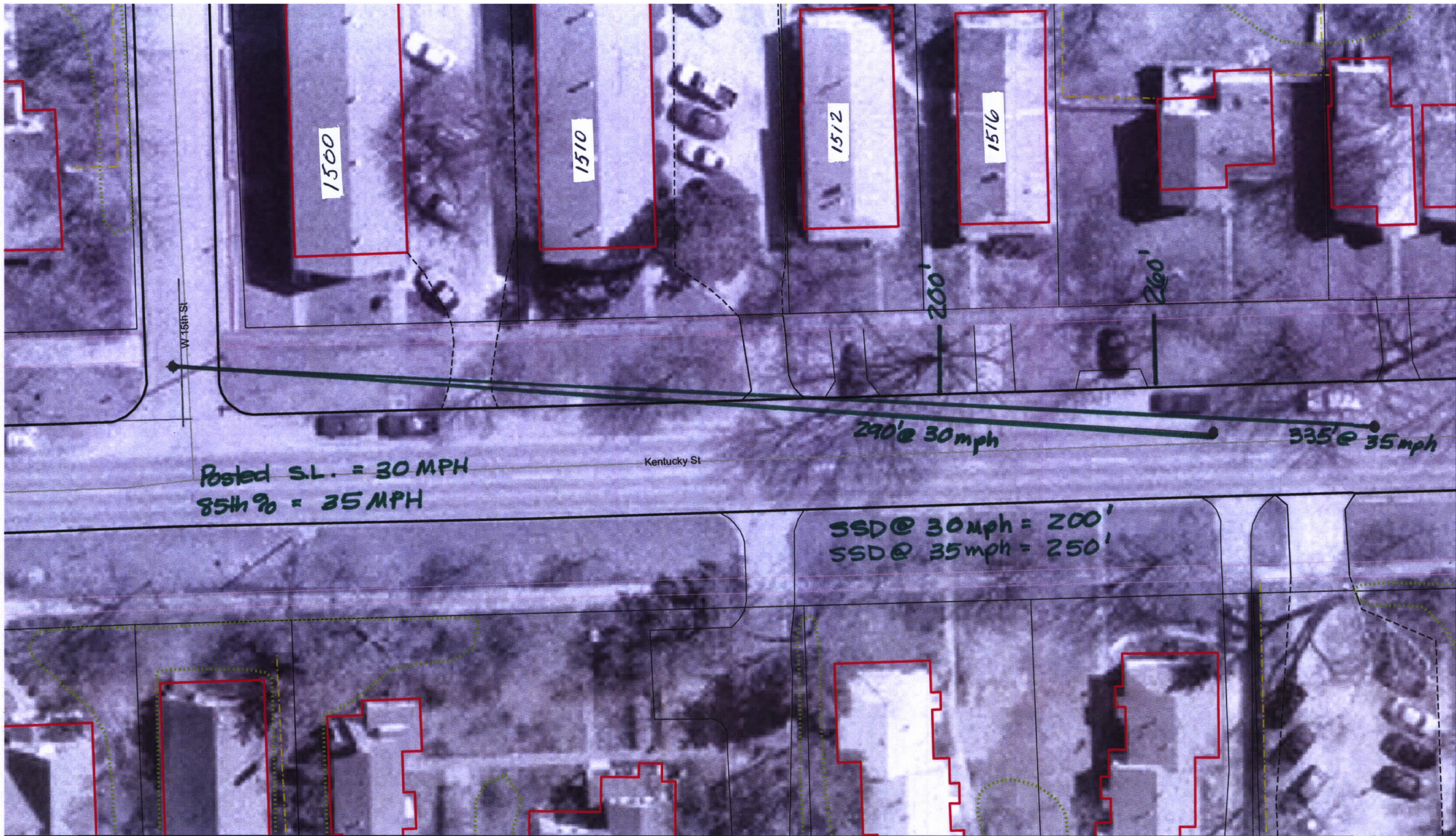


First vehicle is approximately 30 feet south of 15th Street;
second vehicle 110 feet; third vehicle 190 feet; fourth vehicle
260 feet.

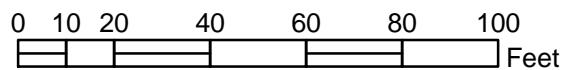


1" = 30'

Kentucky & 15th Street



Parking Spaces Available



the free passage of other vehicles and a clear view of such stopped vehicle shall be available from a distance of 200 feet in each direction upon such highway.

- (b) This section, Section 85 and Section 86 shall not apply to the driver of any vehicle which is disabled in such manner and to such extent that it is impossible to avoid stopping and temporarily leaving the vehicle in such position. (K.S.A. 8-1569)

Sec. 84. Officers Authorized to Remove Vehicles.

- (a) Whenever any police officer finds a vehicle in violation of any of the provisions of Section 83, such officer is hereby authorized to move such vehicle, or require the driver or other person in charge of the vehicle to move the same, to a position off the roadway.
- (b) Any police officer is hereby authorized to remove or cause to be removed to a place of safety any unattended vehicle illegally left standing upon any highway, bridge, causeway or in any tunnel in such position, or under such circumstances as to obstruct the normal movement of traffic.
- (c) Any police officer is hereby authorized to remove or cause to be removed to the nearest garage or other place of safety any vehicle found upon a highway when:
- (1) Report has been made that such vehicle has been stolen or taken without the consent of its owner;
 - (2) The person or persons in charge of such vehicle are unable to provide for its custody or removal; or
 - (3) When the person driving or in control of such vehicle is arrested for an alleged offense for which the officer is required by law to take the person arrested before the municipal judge without unnecessary delay. (K.S.A. 8-1570)

Sec. 85. Stopping, Standing or Parking Prohibited in Specified Places. Except when necessary to avoid conflict with other traffic, or in compliance with law or the directions of a police officer or official traffic-control device, no person shall:

- (a) Stop, stand or park a vehicle:
- (1) On the roadway side of any vehicle stopped or parked at the edge or curb of a street;
 - (2) On a sidewalk;
 - (3) Within an intersection;

- (4) On a crosswalk;
 - (5) Between a safety zone and the adjacent curb or within 30 feet of points on the curb immediately opposite the ends of a safety zone, unless a different length is indicated by signs or markings;
 - (6) Alongside or opposite any street excavation or obstruction when stopping, standing or parking would obstruct traffic;
 - (7) Upon any bridge or other elevated structure upon a highway or within a highway tunnel;
 - (8) On any railroad tracks;
 - (9) On any controlled-access highway;
 - (10) In the area between roadways of a divided highway, including crossovers; or
 - (11) At any place where official signs prohibit stopping.
- (b) Stand or park a vehicle, whether occupied or not except momentarily to pick up or discharge a passenger or passengers:
- (1) In front of a public or private driveway;
 - (2) Within 15 feet of a fire hydrant;
 - (3) Within 20 feet of a crosswalk at an intersection;
 - (4) Within 30 feet upon the approach to any flashing signal, stop sign or traffic-control signal located at the side of a roadway;
 - (5) Within 20 feet of the driveway entrance to any fire station and on the side of a street opposite the entrance to any fire station within 75 feet of said entrance, when properly sign-posted;
 - (6) At any place when official signs prohibit standing.
- (c) Park a vehicle, whether occupied or not, except temporarily for the purpose of, and while actually engaged in, loading or unloading property or passengers:
- (1) Within 50 feet of the nearest rail of a railroad crossing;
 - (2) At any place where official signs prohibit parking.
- (d) No person shall move a vehicle not lawfully under his control into any such prohibited area or away from a curb such a distance as is unlawful.
- (e) No person shall stand or park a vehicle in areas designated as fire lanes upon public or private property. (K.S.A. 8-1571)