



KANSAS



FLOODPLAIN MANAGEMENT NEWSLETTER

May 2004

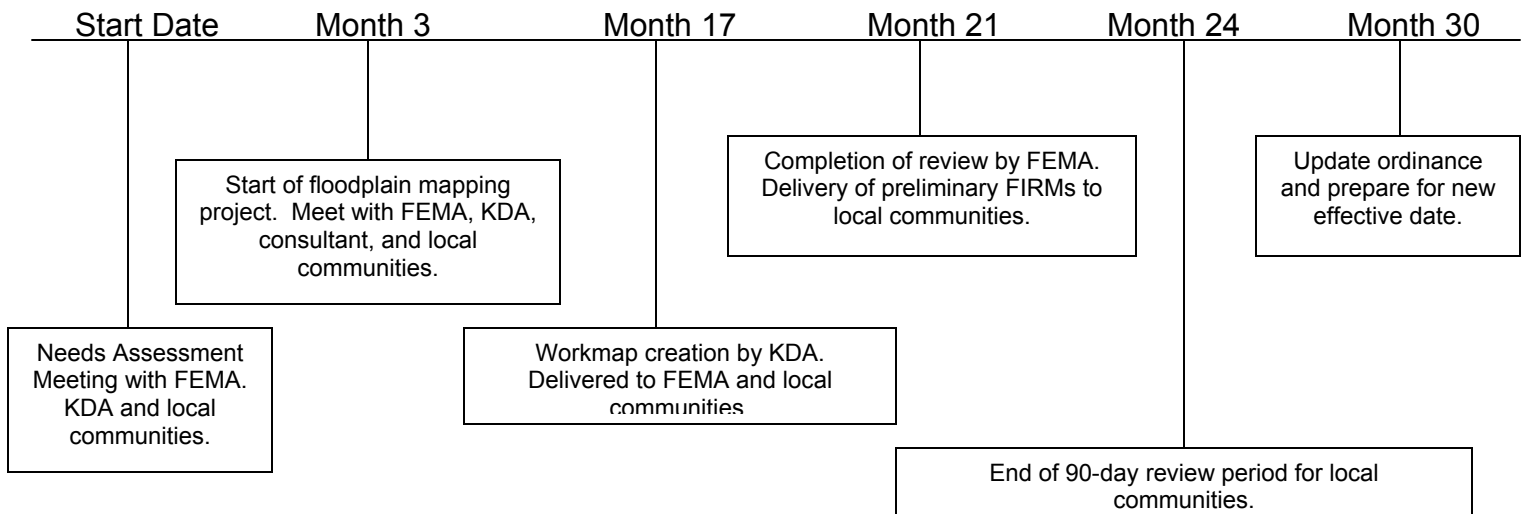
Kansas Department of Agriculture
Division of Water Resources Floodplain Program

Map Modernization Update Timeline

As FEMA moves forward with its map modernization initiative, community involvement continues to be an important component in the floodplain mapping process. FEMA's map modernization initiative proposes to provide digital flood insurance rate maps (DFIRMs) for all communities and counties in Kansas. The community's responsibility in the process is to ensure that the information depicted on the map is as accurate as possible before the map becomes effective. If inaccuracies are found after the effective date of the map, correcting the map areas becomes much more difficult. Below you will find a step-by-step process that a community will go through during a floodplain mapping project.

continued on page 2

Floodplain Remapping Process New Effective Maps Project - Month 30



Start Date - Needs Assessment

Before the project starts, KDA and FEMA meet with officials of communities that will be affected by the proposed floodplain mapping project to allow all parties to assess needs and prioritize areas that need restudy. This meeting also is an opportunity for the communities to discuss with KDA and FEMA any relevant information they might have, such as storm water drainage master plans, topographic data, or any other hydraulic or hydrologic modeling that could potentially be used in the project.

Month Three - Project Kickoff

Once the floodplain mapping project begins, KDA, FEMA and the engineering consultant will meet with community officials for all affected communities to coordinate efforts. This is an opportunity for community officials to meet the engineering consultant and discuss methodology. This is an excellent opportunity for the communities to share any relevant information with KDA and the consultant. Greater community involvement creates a smoother running project and a more accurate final map.

Month 17 - Workmap Delivery

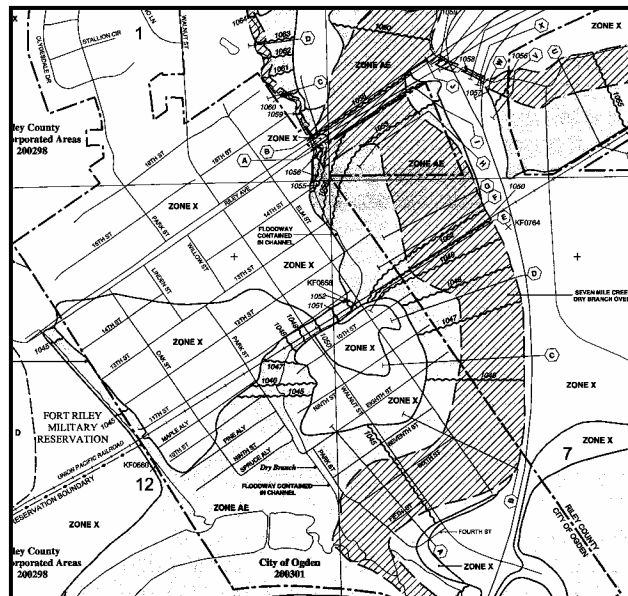
After the consultant has created the workmap, the information will be delivered to FEMA for technical review. At this time, the workmap also will be delivered to affected communities so they can get a head start on the local review process. At this point, the maps are not official

preliminary FIRMs, but, generally the floodplain information on the workmap is not significantly different than the floodplain information on the preliminary FIRMs, unless the community identifies areas where the floodplain is incorrect.

Month 21/Month 24 - Preliminary FIRM for Review and Protest/Appeal

After FEMA reviews the data and the consultant has addressed any concerns FEMA may have had, FEMA distributes preliminary FIRMs to all affected communities. At this point, a community has 90 days to review the map and note any areas that are inaccurate. The span of

time to do this may be short depending on the amount of floodplain in a given community. Communities should have reviewed the workmap before the information becomes a preliminary FIRM, so they should be aware of any areas of concern on the preliminary FIRM maps almost immediately.



Month 30 - Delivery of Effective FIRMs

New effective FIRMs are distributed to all affected communities. The local community has six months to update their ordinance to reflect the effective date of the new maps and to incorporate any floodplain management regulation changes that may have occurred since the previous ordinance was adopted.

Opportunity for Community Visits

The staff of the Floodplain Program would like to extend an invitation to you...

As part of our goal to help local communities administer the National Flood Insurance Program, we periodically visit municipalities statewide to discuss regulations, maps, permit requirements and grant opportunities. If you would like us to visit your community, please let us know. We appreciate the opportunity to visit with you about your community's floodplain management program and to provide some one-on-one training and materials to help you with floodplain management. To schedule a visit, please contact Rhonda Montgomery at (785) 296-4622 or by e-mail to rmontgomery@kda.state.ks.us.

Kansas Floodplain Manager Conference Set for September 8-9

The Kansas Department of Agriculture's Division of Water Resources and the Kansas Association of Floodplain Managers will host their first ever Kansas floodplain manager conference Sept. 8 and 9 at the Holidome in Topeka.

A variety of topics will be covered at the conference, including a map modernization update, technical discussions, all-hazards plan training, state permitting requirements and insurance information.

A complete registration packet with details about cost, a schedule of events and hotel information will be finalized soon.

Community Rating System (CRS) Update

The Division of Water Resources Floodplain Program staff has been busy working with local communities interested in the Community Rating System. Communities expressing interest and receiving training on the Community Rating System include Riley County, the Cities of Sterling, Kinsley, Lawrence and Johnson County.

Lawrence completed their CRS application; it has been recommended to FEMA for a Class 8 effective October 1, 2004. Lawrence will come into the CRS with a Class 8, which means a 10 percent reduction in flood insurance premium rates for Lawrence residents in special flood hazard areas and a higher level of awareness of floodplain management for all Lawrence residents, staff and elected officials. Congratulations to Lawrence.

Lawrence will join Lindsborg, Olathe and Shawnee in the Community Rating System.

If your community is interested in reducing flood insurance premiums for residents and improving floodplain management, please contact Rhonda Montgomery at (785) 296-4622 or by e-mail to rmontgomery@kda.state.ks.us, to discuss how the Community Rating System can benefit your community.

Calendar of Upcoming Events



June 14-17, 2004 Managing Floodplain Development through the NFIP Emmitsburg, MD

This is a training opportunity for local officials responsible for administering their local floodplain management ordinance. The focus is on the NFIP and concepts of floodplain management, maps and studies, ordinance administration, and the relationship between floodplain management and flood insurance.

June 15, 2004 Basics of the NFIP Fort Scott, KS

This eight-hour workshop will focus both on flood insurance and the regulatory aspects of the National Flood Insurance Program. The morning flood insurance training session will be conducted by Computer Sciences Corporation (FEMA's servicing agent), and the afternoon will focus on the basics of the NFIP from a local government perspective.

June 16, 2004 Basics of the NFIP Wichita, KS

See June 15, 2004, training explanation.

June 23, 2004 The Role of the Floodplain Manager Salina, KS

This one-day training is designed to review the expectation that the NFIP has for your community's floodplain manager. Discussion items will include NFIP regulations, maps and data, permit requirements, elevation certificates, buildings in A zones, ordinance review, inspections, enforcement and appeals, special uses and variances.

July 13, 2004 Basics of the NFIP Concordia, KS

See June 15, 2004, training explanation.

July 14, 2004 Basics of the NFIP Emporia, KS

See June 15, 2004, training explanation.

July 22, 2004 The Role of the Floodplain Manager Dodge City, KS

See June 23, 2004, training explanation.

July 27, 2004 Basics of the NFIP Garden City, KS

See June 15, 2004, training explanation.

July 28, 2004 Basics of the NFIP Hays, KS

See June 15, 2004, training explanation.

July 26-29, 2004 NFIP/Community Rating System Emmitsburg, MD

This course covers the Community Rating System (CRS), FEMA's national initiative of the NFIP. It describes activities eligible for credit under CRS, how a community applies, and how a community modifies an application to improve its classification.

September 8-9, 2004 Kansas Association of Floodplain Manager's Conference Topeka, KS

The Kansas Association of Floodplain Managers and the Kansas Department of Agriculture, Division of Water Resources Floodplain Program are sponsoring a two-day conference in Topeka. This conference will cover a variety of informative topics including mapping, technical issues, planning, EC training and response.

September 27-30, 2004 Digital Hazards Data Emmitsburg, MD

This course is designed to give floodplain and emergency management personnel the necessary skills and knowledge to use digital flood data and other hazard data. Participants must have basic computer skills and literacy, including knowledge of Windows. This training supports FEMA's conversion of the paper flood insurance rate maps to a computerized format.

If you are interested in any of these training opportunities, please contact Rhonda Montgomery at (785) 296-4622, or by e-mail to rmontgomery@kda.state.ks.us.

ANOTHER CFM DATE: CERTIFIED FLOODPLAIN MANAGER PROGRAM

The Certified Floodplain Manager (CFM) exam will be offered on September 10, at the Division of Water Resources office, 109 SW 9th Street, Topeka, following the Kansas Floodplain Manager's Conference

The Association of State Floodplain Managers (ASFPM) established the certified floodplain manager program in 1999. The emphasis of the CFM program is to ensure that floodplain managers know and understand the standards of the National Flood Insurance Program and have access to the tools to implement these standards at the local level.

The primary goal of the ASFPM CFM program is to promote wise use of the nation's floodplains, help reduce the nation's flood losses, and protect and enhance the natural resources and functions of floodplains by improving knowledge and abilities of floodplain managers. A secondary goal is to increase the prominence of floodplain management in decision-making by local officials and the public.

The state of Missouri, in cooperation with the state of Kansas, offered the CFM exam April 2, in Riverside, Missouri. We were excited to have five test takers for the exam. Just as important, there are many interested floodplain managers in Kansas seeking to further their profession with professional certification.

To sign up for the exam, contact the ASFPM office at (608) 274-0123.

Congratulations to our CFMs in Kansas:

Jon Bristor, Belle Plaine

John Denlinger, Overland Park

Robert George, Wichita

Julie Grauer, Topeka

Steve Higgins, Alta Vista

Donald Kostecki, Topeka

Dennis Lawlor, Topeka

Paul Miller, Prairie Village

Rhonda Montgomery, Topeka

Ricky Nusz, Kansas City

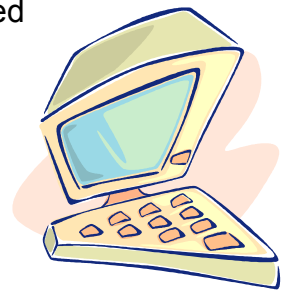
Collin Olsen, Lawrence

William Zung, Lawrence

Join Floodplain Program Listserv to Receive Timely Updates

The Floodplain Program hosts a listserv to allow local floodplain managers, elected officials and engineers interested in floodplain management to sign up to receive NFIP updates, as well as the Floodplain Management Newsletter, by email.

If you would like to receive NFIP/Floodplain Management tips, the quarterly newsletter and other pertinent information from FEMA, enter your email address into our listserve at <http://www.ks-agr.org/eca/dwr/newsletter/addemail.asp>.



If you have any questions about the listserv, contact Collin Olsen at (785) 296-2513 or e-mail at colsen@kda.state.ks.us. Also, please share this information with others who are interested so they can sign up as well.

KDA/DWR Water Structures Floodplain Program Staff

Julie Grauer, CFM, Floodplain Program Supervisor
Rhonda Montgomery, CFM, NFIP Coordinator
Collin Olsen, CFM, Floodplain Mapping Specialist

(785) 296-5440
(785) 296-4622
(785) 296-2513

jgrauer@kda.state.ks.us
rmontgomery@kda.state.ks.us
colsen@kda.state.ks.us

Mailing Address:
109 SW 9th Street, 2nd Floor
Topeka, KS 66612-1283
Fax: (785) 296-4835
www.accesskansas.org/kda/



046-08
Kansas Department of Agriculture
Division of Water Resources
Floodplain Management
109 SW 9th Street 2nd Floor
Topeka KS 66612-1283

Please help us keep our records up to date. If your floodplain manager is different than the name that appears on this newsletter, please call (785) 296-4622, or send e-mail to rmontgomery@kda.state.ks.us, to inform us of the change.

Also, if your mayor or city clerk has changed, please let us know. Thank you.