



Amy Gottschamer  
President

4931 West 6th  
Suite 11  
Lawrence, KS 6604  
(785) 856-600  
Fax (785) 856-600  
www.googolssoftun.co  
amy@googolssoftun.co

Sandra L. Day  
Brad Hauschild  
Lawrence/Douglas County Metropolitan Planning Office  
City Hall, 6 East 6<sup>th</sup> St., P.O. Box 708  
Lawrence, KS 66044-0708

May 7, 2004

To Ms. Day, Mr. Hauschild, and other concerned parties:

Googols of Fun is currently operating as a Children's Edutainment Center. We provide educational and entertaining activities for young children ranging in age from infants to 15 yr-olds. To date our normal operating procedure has been to require that all children be accompanied by a responsible adult to supervise their activities within Googols of Fun. We are currently endeavoring to provide day camp activities for which the children would be dropped off. We are working with the Kansas Department of Health and Environment (KDHE) to obtain a license allowing us to provide school-age based programs to children. Part of this licensure process requires approval from the Planning Office.

We are not making any physical changes to Googols only providing an additional service. It will blend with our current use totally, in that we expect to offer all the existing activities but in a structured format and supervised by Googols staff. As education is a primary focus for us, we will offer planned interactive classes predominantly in the natural sciences, but will also explore arts & crafts and literature based studies.

The camps will be offered to children old enough to be enrolled in kindergarten through 6<sup>th</sup> grade. The hours are expected to be 8am-12 noon and 1pm-5pm. We can then offer two concurrent camps in week-long sessions. We

4931 West 6th, Suite 118 Lawrence, KS 66049 (785) 856-6002 Fax (785) 856-6003 admin@googolssoftun.com www.googolssoftun.com

anticipate an average of 20-25 kids per session/per week. We will meet all requirements for ratios of students to adults as dictated by KDHE and anticipate that will be 1:12.

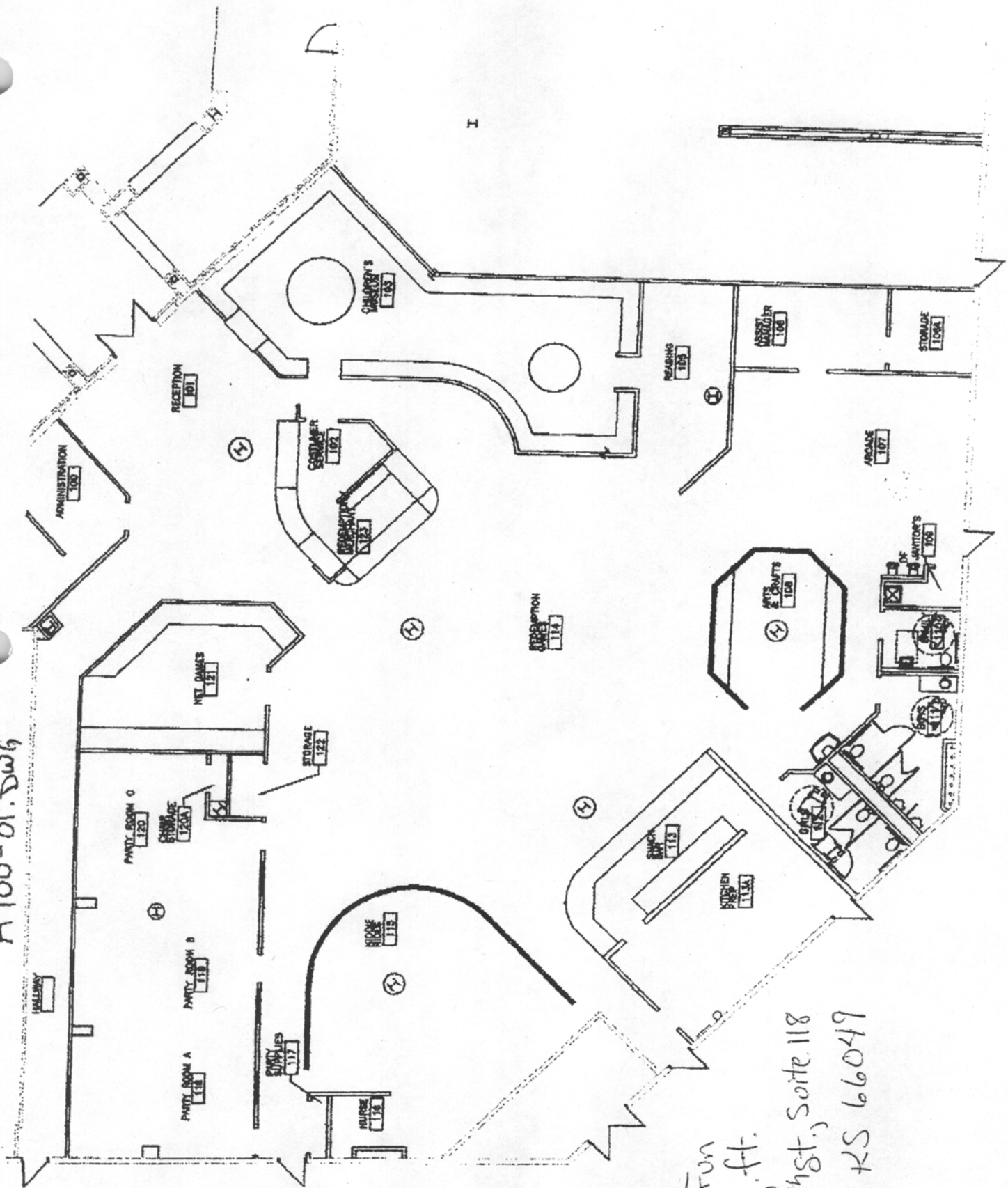
If there are further questions, I can be reached at Googols at 856-6002.  
Thank you for your time and consideration.

Yours truly,

*Amy L. R. Gottschamer*

Amy L. R. Gottschamer  
Googols of Fun, President  
4931 W. 6<sup>th</sup> St., Suite 118  
Lawrence, KS 66049  
785-856-6002  
785-856-6003 fax  
[amy@googolsoffun.com](mailto:amy@googolsoffun.com)  
[www.googolsoffun.com](http://www.googolsoffun.com)

A100-01.DWG



Googols of Fun  
11,000 Sq. ft.  
4931 W. 6<sup>th</sup> St., Suite 118  
Lawrence, KS 66049

LEGAL DESCRIPTION - PHASE 1 (APPROVED)  
Lot One, Colonial Northwest, a subdivision in the city of Lawrence, Douglas County, Kansas.

LEGAL DESCRIPTION - PHASE 1B, 1B, 1C  
Lot 4, 5, 6, 7, 8, 9, 10, 11, 12 Colonial Northwest No. 2, A Subdivision in the City of Lawrence, Douglas County, Kansas.

LEGAL DESCRIPTION - PHASE #8  
Lot 1, Colonial Northwest No. 2, A Subdivision in the City of



■ LANDSCAPE ARCHITECTURE  
 ■ CIVIL ENGINEERING  
 ■ COMMUNITY PLANNING  
 ■ SURVEYING

1210 WAZARONA, SUITE 100  
 LAWRENCE KANSAS 66044  
 PHONE (913)643-7500  
 FAX (913)643-8410

4040 FRONTLINA, SUITE 200  
 KANSAS CITY, MISSOURI 64111

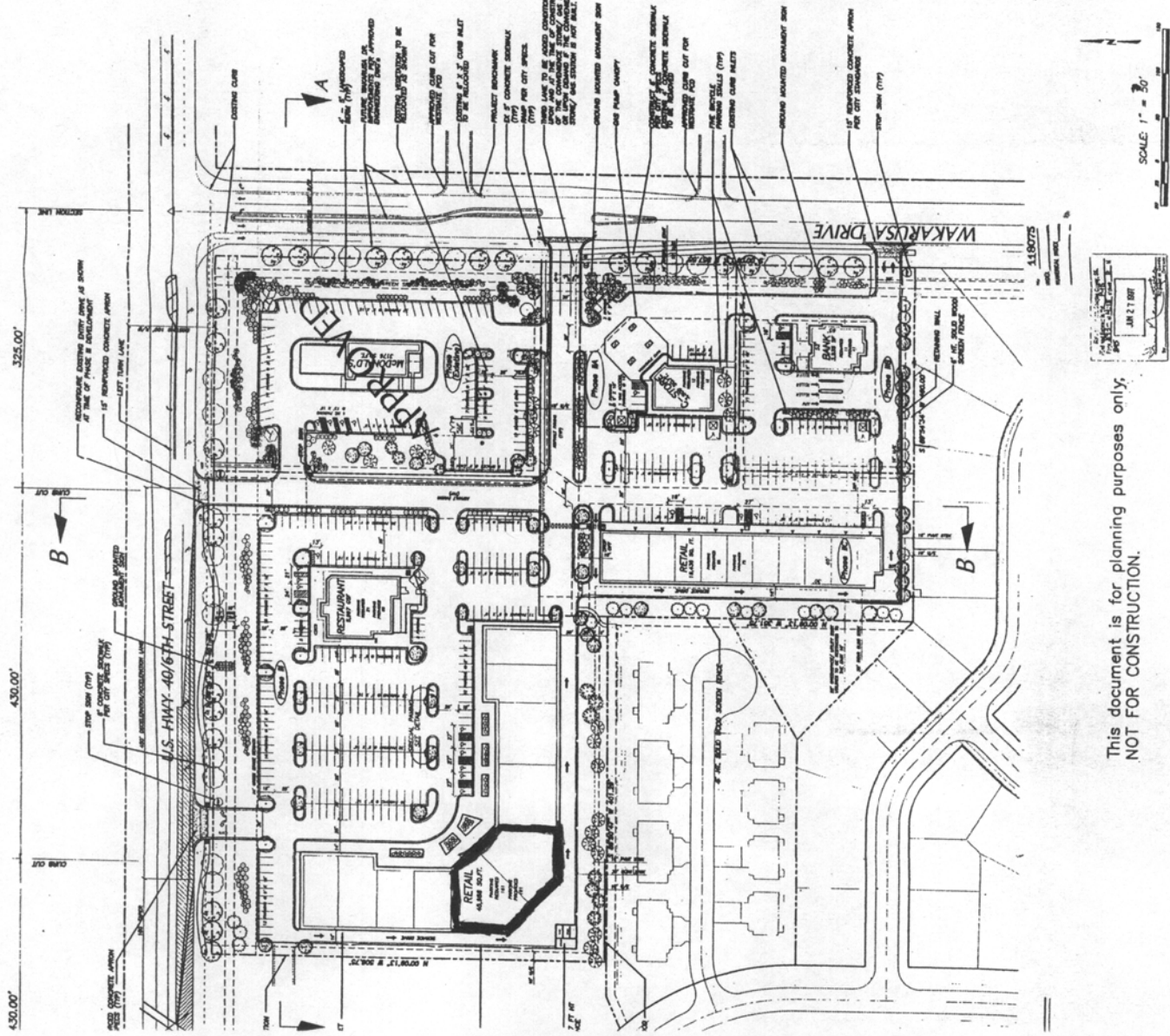
COLONIAL  
NORTHEAST  
PCD67TH & WAKARUSA  
Lawrence, Kansas

## Layout & Landscape

[illegible]

McQuay's Corporation  
Alhambra, Inc.  
Central National Bank  
Citizen Real Estate Corporation, Inc.

PROBES	OPT.	CONCENTR. RANGE	MODE	CONC.
1	①	100% organic sol.	$10^{-5}$ to $10^{-1}$ mol.	mol
2	②	water sol.	$10^{-5}$ to $10^{-1}$ mol.	mol
3	③	organic, nonaqueous	$10^{-5}$ to $10^{-1}$ mol.	mol
4	④	"benzene layer" w/ oil	$10^{-5}$ to $10^{-1}$ mol.	mol
5	⑤	calorimetric solid film	$10^{-5}$ to $10^{-1}$ mol.	mol
6	⑥	solid suspension	$10^{-5}$ to $10^{-1}$ mol.	mol
7	⑦	solid film	$10^{-5}$ to $10^{-1}$ mol.	mol
8	⑧	solid film	$10^{-5}$ to $10^{-1}$ mol.	mol
9	⑨	solid solution	$10^{-5}$ to $10^{-1}$ mol.	mol
10	⑩	solid solution	$10^{-5}$ to $10^{-1}$ mol.	mol
11	⑪	solid solution	$10^{-5}$ to $10^{-1}$ mol.	mol
12	⑫	solid solution	$10^{-5}$ to $10^{-1}$ mol.	mol
13	⑬	solid solution	$10^{-5}$ to $10^{-1}$ mol.	mol
14	⑭	solid solution	$10^{-5}$ to $10^{-1}$ mol.	mol
15	⑮	solid solution	$10^{-5}$ to $10^{-1}$ mol.	mol
16	⑯	solid solution	$10^{-5}$ to $10^{-1}$ mol.	mol
17	⑰	solid solution	$10^{-5}$ to $10^{-1}$ mol.	mol
18	⑱	solid solution	$10^{-5}$ to $10^{-1}$ mol.	mol
19	⑲	solid solution	$10^{-5}$ to $10^{-1}$ mol.	mol
20	⑳	solid solution	$10^{-5}$ to $10^{-1}$ mol.	mol
21	㉑	solid solution	$10^{-5}$ to $10^{-1}$ mol.	mol
22	㉒	solid solution	$10^{-5}$ to $10^{-1}$ mol.	mol
23	㉓	solid solution	$10^{-5}$ to $10^{-1}$ mol.	mol
24	㉔	solid solution	$10^{-5}$ to $10^{-1}$ mol.	mol
25	㉕	solid solution	$10^{-5}$ to $10^{-1}$ mol.	mol
26	㉖	solid solution	$10^{-5}$ to $10^{-1}$ mol.	mol
27	㉗	solid solution	$10^{-5}$ to $10^{-1}$ mol.	mol
28	㉘	solid solution	$10^{-5}$ to $10^{-1}$ mol.	mol
29	㉙	solid solution	$10^{-5}$ to $10^{-1}$ mol.	mol
30	㉚	solid solution	$10^{-5}$ to $10^{-1}$ mol.	mol
31	㉛	solid solution	$10^{-5}$ to $10^{-1}$ mol.	mol
32	㉜	solid solution	$10^{-5}$ to $10^{-1}$ mol.	mol
33	㉝	solid solution	$10^{-5}$ to $10^{-1}$ mol.	mol
34	㉞	solid solution	$10^{-5}$ to $10^{-1}$ mol.	mol
35	㉟	solid solution	$10^{-5}$ to $10^{-1}$ mol.	mol
36	㊱	solid solution	$10^{-5}$ to $10^{-1}$ mol.	mol
37	㊲	solid solution	$10^{-5}$ to $10^{-1}$ mol.	mol
38	㊳	solid solution	$10^{-5}$ to $10^{-1}$ mol.	mol
39	㊴	solid solution	$10^{-5}$ to $10^{-1}$ mol.	mol
40	㊵	solid solution	$10^{-5}$ to $10^{-1}$ mol.	mol
41	㊶	solid solution	$10^{-5}$ to $10^{-1}$ mol.	mol
42	㊷	solid solution	$10^{-5}$ to $10^{-1}$ mol.	mol
43	㊸	solid solution	$10^{-5}$ to $10^{-1}$ mol.	mol
44	㊹	solid solution	$10^{-5}$ to $10^{-1}$ mol.	mol
45	㊺	solid solution	$10^{-5}$ to $10^{-1}$ mol.	mol
46	㊻	solid solution	$10^{-5}$ to $10^{-1}$ mol.	mol
47	㊼	solid solution	$10^{-5}$ to $10^{-1}$ mol.	mol
48	㊽	solid solution	$10^{-5}$ to $10^{-1}$ mol.	mol
49	㊾	solid solution	$10^{-5}$ to $10^{-1}$ mol.	mol
50	㊿	solid solution	$10^{-5}$ to $10^{-1}$ mol.	mol

[illegible]

This document is for planning purposes only;  
NOT FOR CONSTRUCTION.