

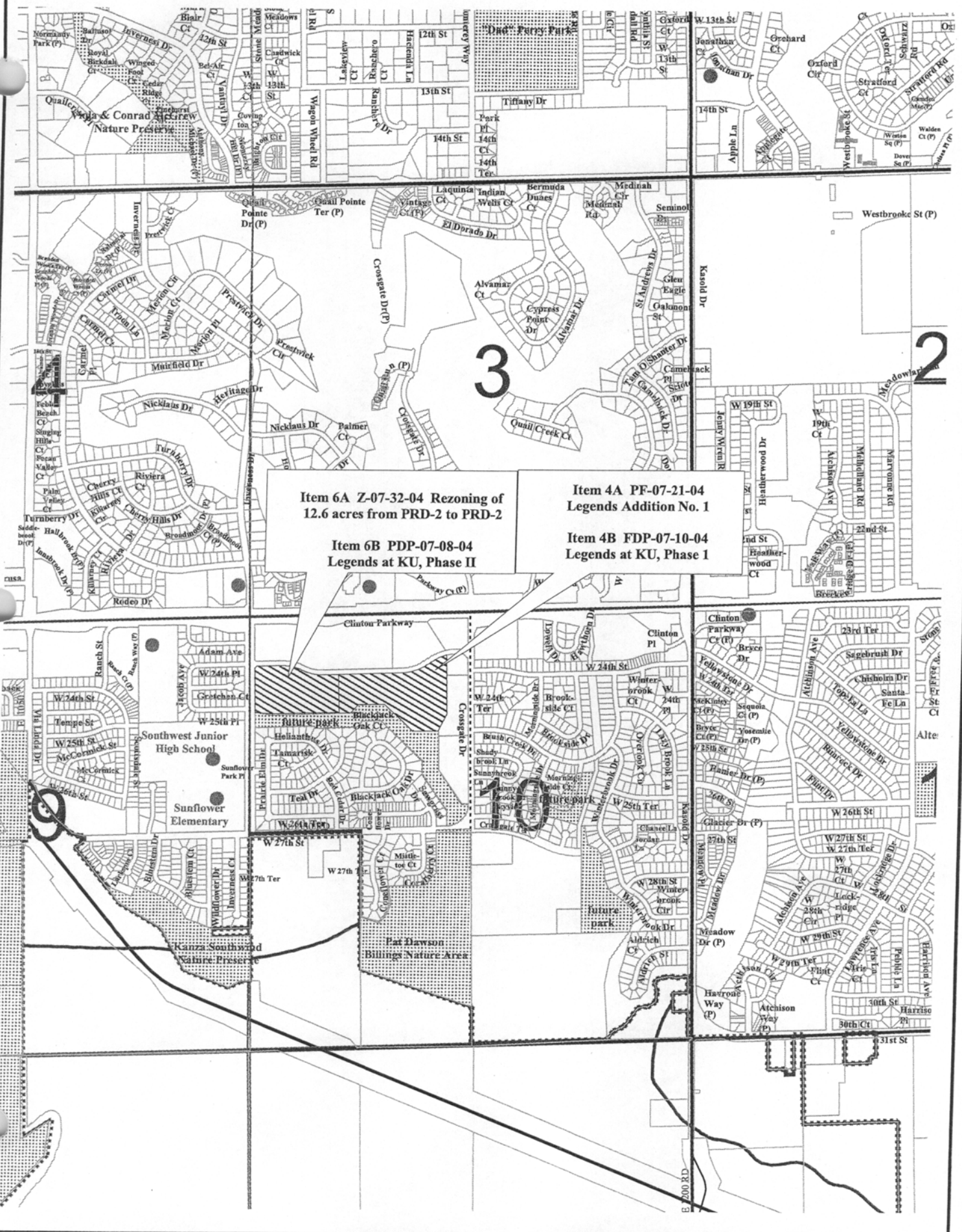
Z-07-32-04: Rezoning 12.55 acres from PRD-2 to PRD-2  
South of 24th Place between Crossgate Dr & Inverness Dr.

Lawrence-Douglas County Planning Office  
August 2004



Area Requested  
Scale: 1 Inch = 600 Feet





Item 6A Z-07-32-04 Rezoning of  
12.6 acres from PRD-2 to PRD-2

Item 4A PF-07-21-04  
Legends Addition No. 1

Item 6B PDP-07-08-04  
Legends at KU, Phase II

Item 4B FDP-07-10-04  
Legends at KU, Phase I