



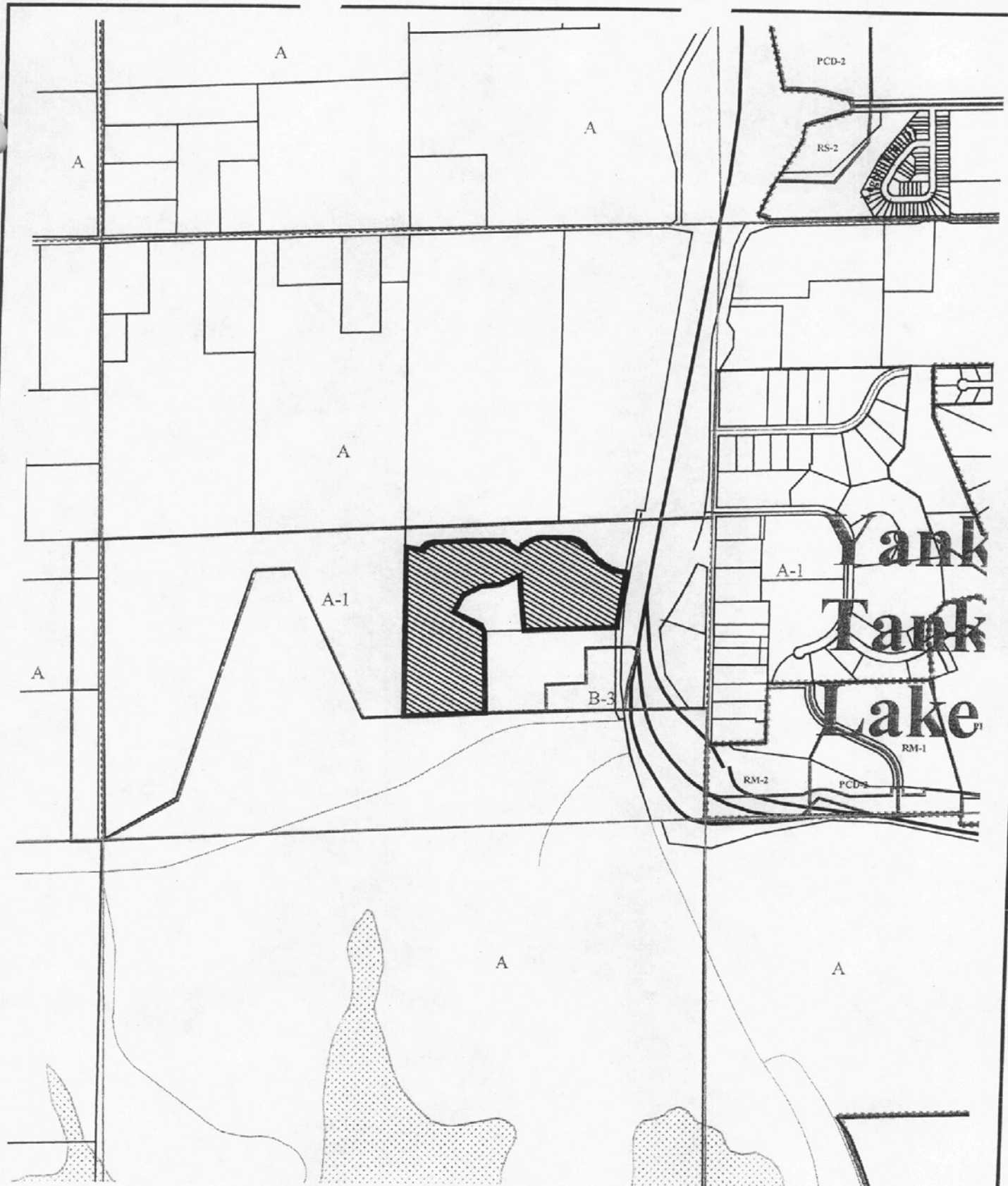
Z-01-05-05: Rezoning of 9.12 acres in the Area Northwest of Clinton Parkway on West Side of Highway K-10 (North of Judy's Junction)

Lawrence-Douglas County Planning Office
January 2005



Area Requested

Scale: 1 Inch = 1200 Feet



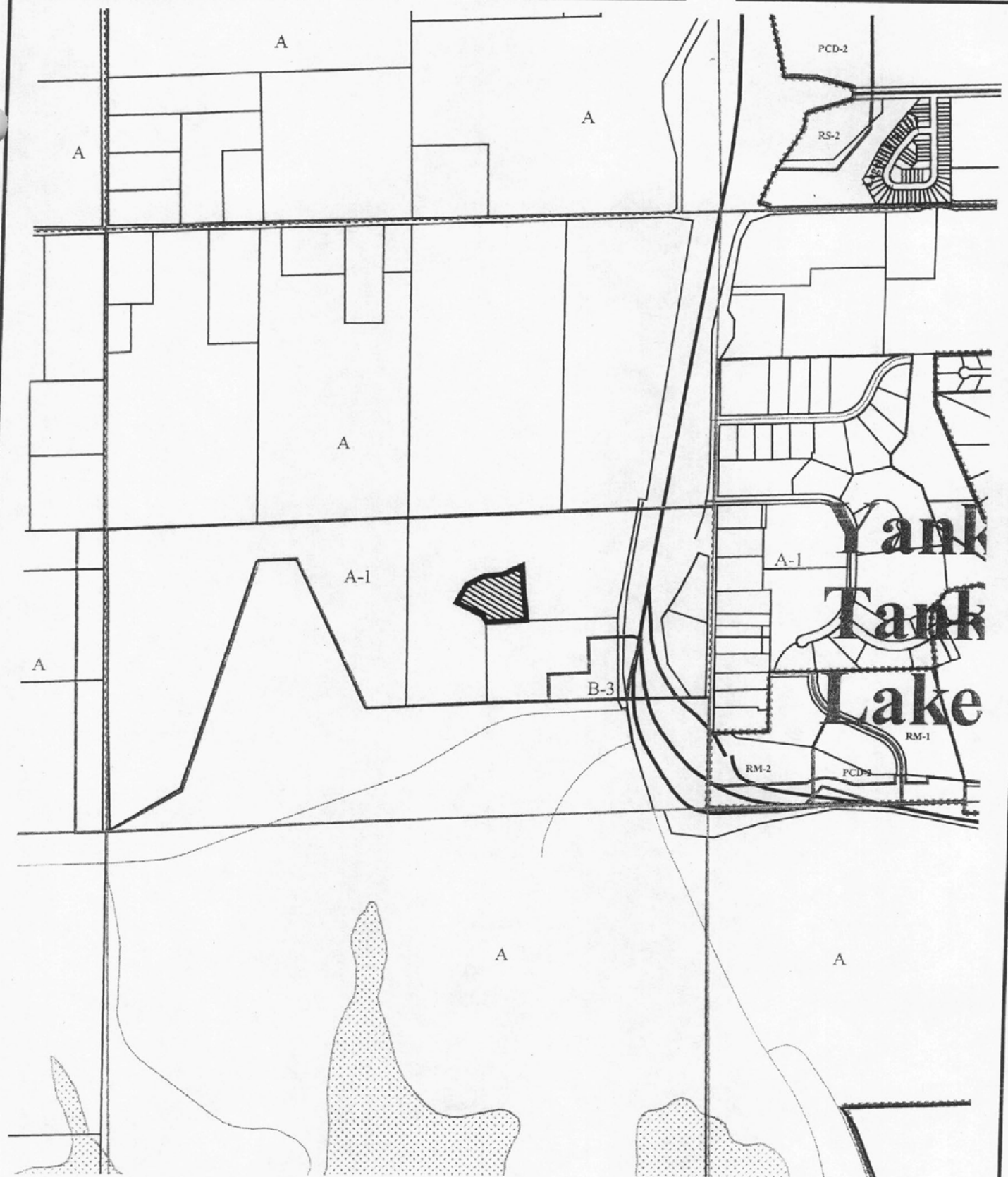
Z-01-06-05: Rezoning of 39.13 acres in the Area Northwest of Clinton Parkway on West Side of Highway K-10 (North of Judy's Junction)

Lawrence-Douglas County Planning Office
January 2005



Area Requested

Scale: 1 Inch = 1200 Feet



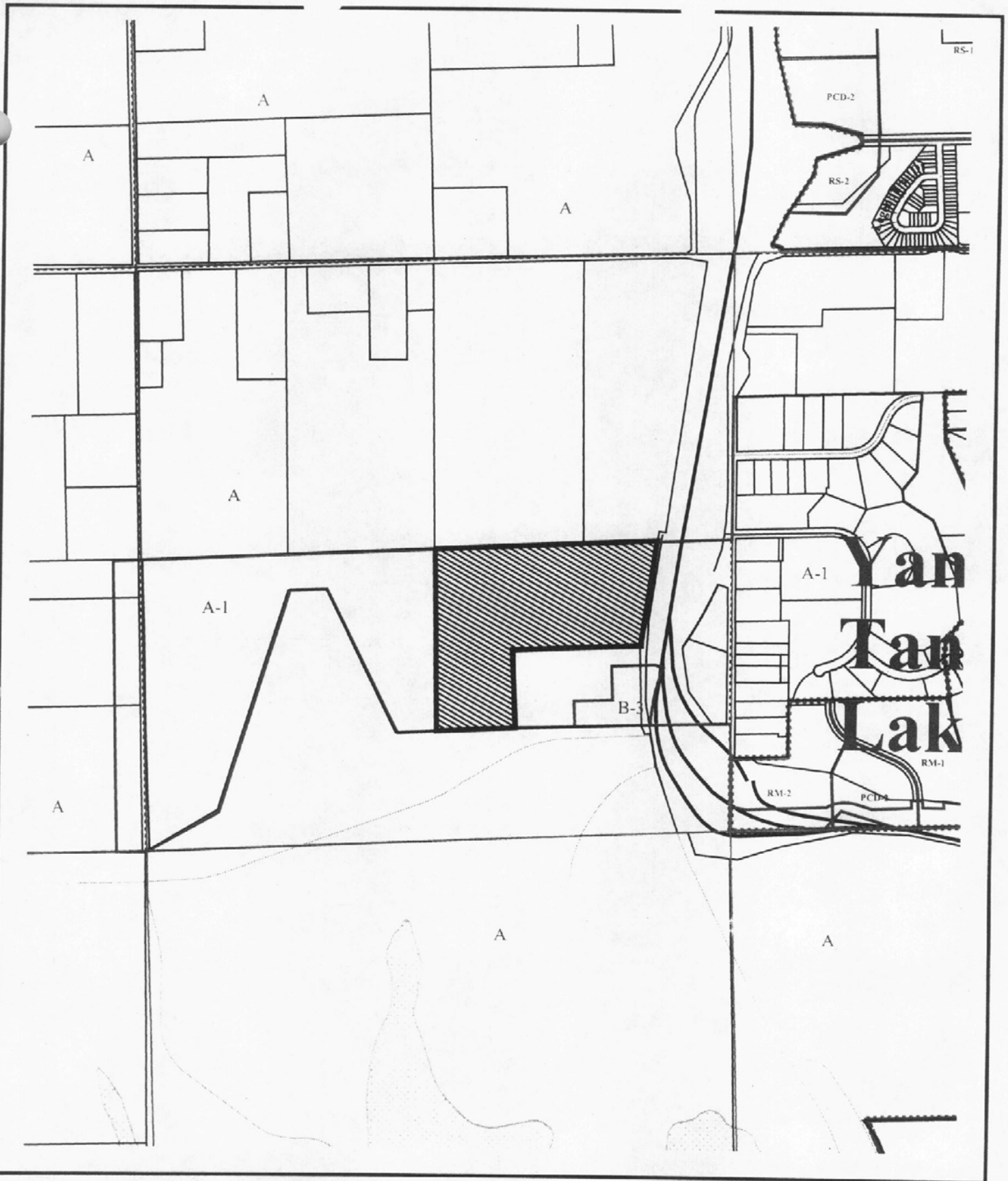
Z-01-07-05: Rezoning of 4.6 acres in the Area Northwest of Clinton Parkway on West Side of Highway K-10 (North of Judy's Junction)

Lawrence-Douglas County Planning Office
January 2005



Area Requested

Scale: 1 Inch = 1200 Feet



A-01-01-05: Annexation of Approx. 52.85 acres Northwest of Clinton Parkway
on West Side of Highway K-10 (North of Judy's Junction)

Lawrence-Douglas County Planning Office
January 2005



Area Requested

Scale: 1 Inch = 1200 Feet

36

31

32

33

NORTH 1500 ROAD

E 800 RD

N 1500 RD

12

7

8

Item 11A A-01-01-05
Annexation of 54 acres

Item 11B Z-01-05-05 Rezoning
8.7 acres from A to RS-2
Item 11C Z-01-06-05 Rezoning
40 acres from A to RM-2
Item 11D Z-01-07-05 Rezoning
4.6 acres from A to RM-D

Item 7 Z-12-56-04 Rezoning 5.21 acres
from A-1 to RSS
Item 8 Z-12-51B-04 Rezoning 5.21 acres
from A-1 to RMD

6

SEE LAKE ESTATES

Yanketee
Lake

Yanketee
Lake

Yanketee
Lake

Yanketee
Lake

Yanketee
Lake