

LEGAL DESCRIPTION

THIS IS A REPLAT OF LOTS 1 AND 2, BLOCK ONE, AND KEN RIDGE DRIVE, RIGHT-OF-WAY IN DIAMONDHEAD, A SUBDIVISION IN THE CITY OF LAWRENCE, DOUGLAS COUNTY, KANSAS AND LING IN THE NORTHWEST QUARTER OF SECTION 32, TOWNSHIP 12 SOUTH, RANGE 19 EAST OF THE SIXTH PRINCIPAL MERIDIAN.

DEDICATION

BE IT KNOWN, TO ALL MEN THAT I (WE), THE UNDERSIGNED OWNER(S) OF THE ABOVE DESCRIBED TRACT OF LAND, HAVE HAD CAUSE FOR THE SAME TO BE SURVEYED AND PLATED UNDER THE NAME OF "DIAMONDHEAD 2ND PLAT" AND HAVE CAUSED THE SAME TO BE SUBDIVIDED INTO LOTS AND STREETS AS SHOWN AND FULLY DEFINED ON THIS PLAT. ALL STREETS, DRIVES, ROADS, ETC. SHOWN ON THIS PLAT AND NOT HERETOFORE DEDICATED TO PUBLIC USE ARE HEREBY SO DEDICATED. AN EASEMENT IS HEREBY GRANTED TO THE CITY OF LAWRENCE AND PUBLIC UTILITY COMPANIES TO ENTER UPON, CONSTRUCT AND MAINTAIN UTILITIES UPON, OVER, AND UNDER THOSE AREAS OUTLINED ON THIS PLAT AS UTILITY EASEMENT OR "U/E" AND "DRAINAGE EASEMENT OR "D/E" AND "PEDESTRIAN EASEMENT OR "P/E" AND "LANDSCAPE EASEMENT OR "L/E."

DEBBIE LUV, GENERAL PARTNER
DIAMOND HEAD LIMITED PARTNERSHIP

ACKNOWLEDGEMENT

STATE OF KANSAS
COUNTY OF DOUGLAS

BE IT REMEMBERED THAT ON THIS DAY OF 2007, BEFORE ME, THE UNDERSIGNED, A NOTARY PUBLIC IN AND FOR SAID COUNTY AND STATE, ONE DEBBIE LUV, GENERAL PARTNER DIAMOND HEAD LIMITED PARTNERSHIP, WHO IS (ARE) PERSONALLY KNOWN TO ME TO BE THE SAME PERSON(S) WHO EXECUTED THE FOREGOING INSTRUMENT OF WRITING AND DULY ACKNOWLEDGE THE EXECUTION OF THE SAME.

IN WITNESS WHEREOF, I HAVE HEREBY SET MY HAND AND AFFIXED MY SEAL ON THE DAY AND YEAR LAST WRITTEN ABOVE.

NOTARY PUBLIC MY COMMISSION EXPIRES

ENDORSEMENTS

APPROVED BY RIGHTS-OF-WAY AND EASEMENTS
PLANNING COMMISSION
LAWRENCE, KANSAS
DOUGLAS COUNTY, KANSAS

CHAIR DATE MAYOR DATE
HOLLY KREBS MIKE AMYX

REVIEWED IN COMPLIANCE CITY CLERK DATE
WITH K.S.A. 58-2005, FRANK S. REEB

MICHAEL D. KELLY, P.L.S. #869
DOUGLAS COUNTY SURVEYOR

CERTIFICATION

I HEREBY CERTIFY THAT THE PLATTED AREA AND THE LOCATION MAP SHOWN HEREON ARE THE TRUE AND ACCURATE RESULTS OF A FIELD SURVEY PERFORMED UNDER MY DIRECT SUPERVISION IN THE MONTH OF MAY, 2006 AND THAT THE PLAT IS A CLOSED TRAVERSE.

JOHN E. SELK, P.E., P.L.S. #610
1310 WAKARUSA DRIVE
LAWRENCE, KANSAS 66049
(785) 843-7530
PLAT PREPARED JANUARY, 2007

FILING RECORD

STATE OF KANSAS
COUNTY OF DOUGLAS

THIS IS TO CERTIFY THAT THIS INSTRUMENT WAS FILED FOR RECORD IN THE OFFICE OF THE DOUGLAS COUNTY REGISTER OF DEEDS ON THIS DAY OF 2007, AND IS DULY RECORDED AT AM/PM, IN PLAT BOOK PAGE .

REGISTER OF DEEDS
KAY PENSELL

NOTES

STREET TREES SHALL BE PROVIDED IN ACCORDANCE WITH THE MASTER STREET TREE PLAN FILED WITH THE REGISTER OF DEEDS, BOOK , PAGE .

THE CITY IS HEREBY GRANTED A TEMPORARY RIGHT OF ENTRY TO PLANT THE REQUIRED STREET TREES PURSUANT TO CHAPTER 21, ARTICLE 7, SECTION 21-708d OF THE CITY SUBDIVISION REGULATIONS.

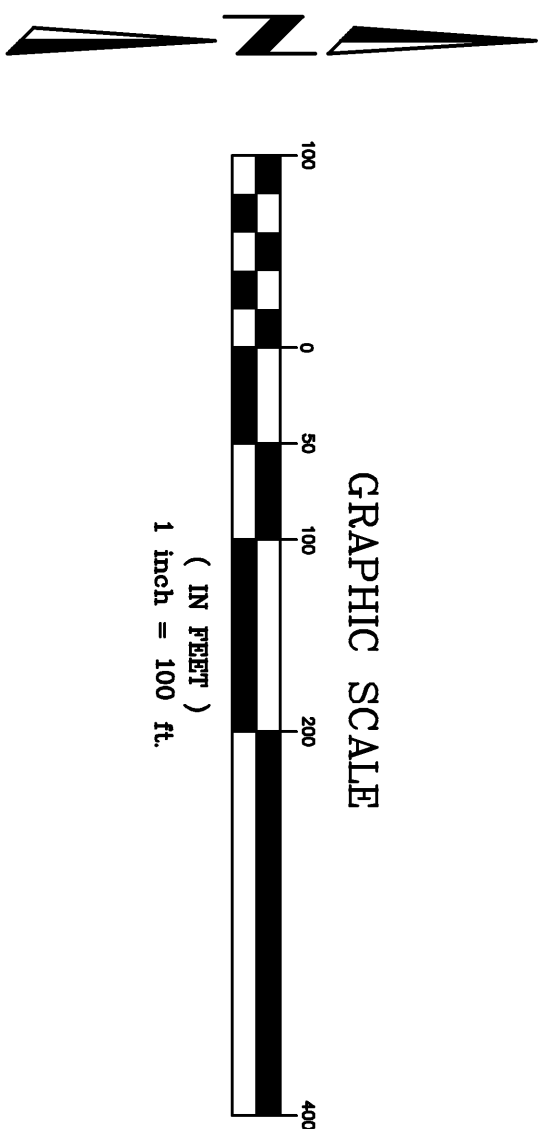
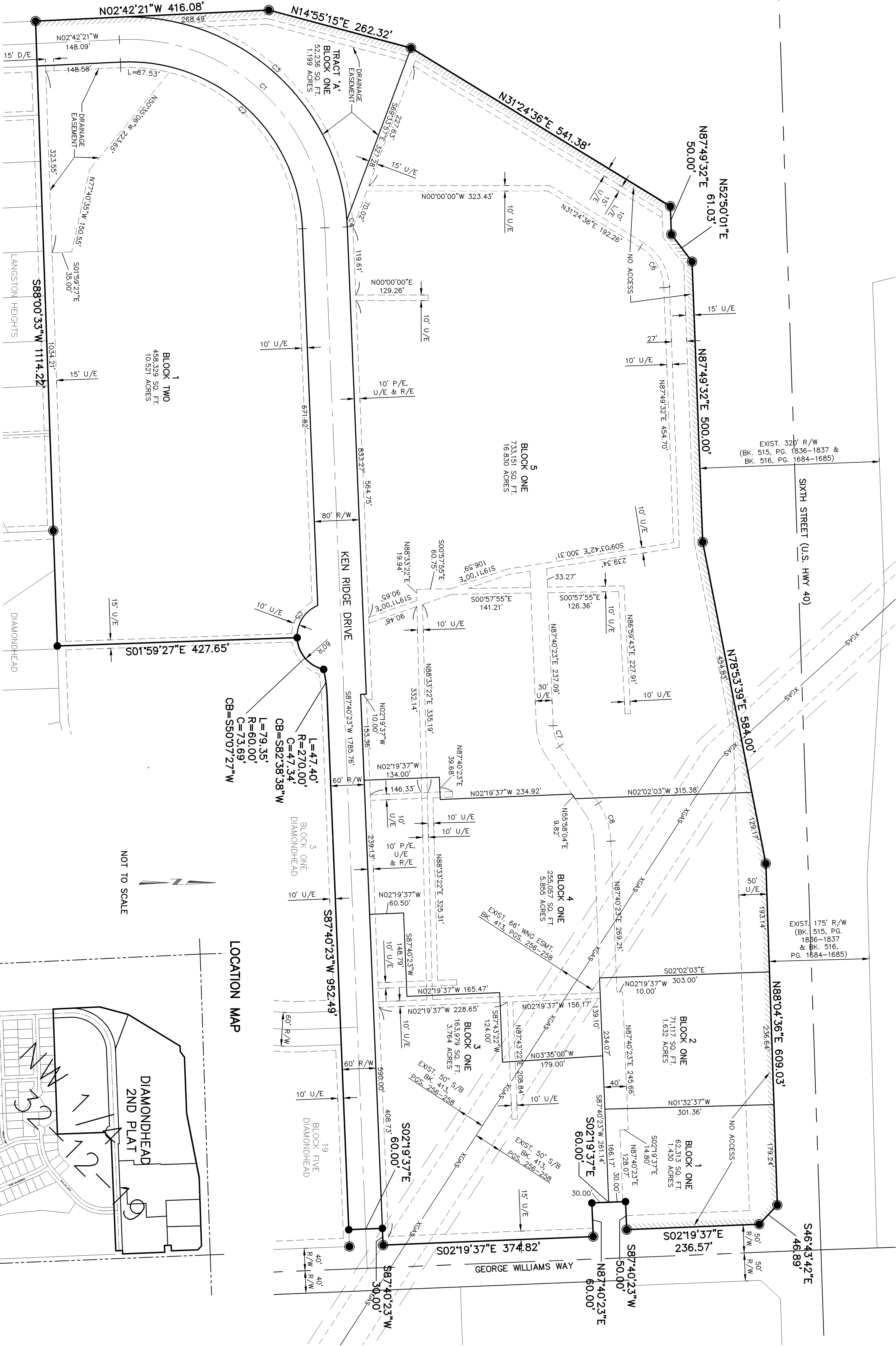
BASIS OF BEARINGS FOR THIS PLAT IS NAD83-MODIFIED STATE PLANE COORDINATES. (KANSAS NORTH ZONE) ERROR OF CLOSURE = 1 : 425,812.

OCCUPANCY FOR DEVELOPMENT PROPOSED ON LOTS 1 AND 2, BLOCK ONE IS NOT PERMITTED UNTIL THE W. 6TH STREET IMPROVEMENTS (KDOT PROJECT NO. 40-23K-6880-01) ARE COMPLETE.

THE EXISTING DRIVEWAY ACCESS TO W. 6TH STREET MAY REMAIN UNTIL CONSTRUCTION OF 6TH STREET IMPROVEMENTS (AS NOTED ABOVE) ARE UNDERWAY. UPON COMPLETION OF 6TH STREET IMPROVEMENTS (AS NOTED ABOVE AND SLATED FOR THE END OF 2009), LOT 1, BLOCK ONE SHALL HAVE NO DIRECT ACCESS TO W. 6TH STREET.

ACCESS TO GEORGE WILLIAMS WAY SHALL BE PROHIBITED FOR 350' SOUTH OF THE INTERSECTION OF W. 6TH STREET AND GEORGE WILLIAMS WAY (AS SHOWN HEREON), PER THE W. 6TH STREET ACCESS MANAGEMENT PLAN.

SOUTH LAWRENCE TRAFFICWAY RIGHT-OF-WAY



LEGEND

U/E	UTILITY EASEMENT
D/E	DRAINAGE EASEMENT
L/E	LANDSCAPE EASEMENT
P/E	PEDESTRIAN EASEMENT
R/E	ROADWAY EASEMENT
MEBO	MINIMUM ELEVATION BUILDING OPENING

CURVE TABLE

CURVE LENGTH (FATHS)	CHORD	BEARING
C1	552.09	350.00
C2	489.00	310.00
C3	603.00	390.00
C4	72.51	80.00
C5	12.19	390.00
C6	38.72	70.00
C8	71.94	130.00

A FINAL PLAT OF
DIAMONDHEAD
2ND PLAT

A REPLAT OF LOTS 1 AND 2, BLOCK ONE, AND KEN RIDGE DRIVE RIGHT-OF-WAY IN DIAMONDHEAD IN THE CITY OF LAWRENCE, DOUGLAS COUNTY, KANSAS

NW 1/4, SEC. 32-T12S-R19E