

# Memorandum

## City of Lawrence

### Public Works

**TO:** Chuck Soules  
**FROM:** Mark Thiel  
**CC:** Tom Orzulak  
**Date:** 5/7/2013  
**RE:** **Pinckney Tunnel Mural and Restoration Project Completion and Unveiling**

Two years ago the City began a partnership with the Pinckney Elementary School PTO for general maintenance and upkeep of the tunnel that connects the Pinckney neighborhood from the south to the school on the north under 6<sup>th</sup> street. This tunnel had fallen under disrepair, was dark and covered with graffiti. (photo)

With the efforts of Ms. Jenny Skillman and the PTO in collaboration with the city of Lawrence Public Works Department that changed. Though a team approach we were able to correct these deficiencies. (photos).

last October Ms. Skillman approached us about an additional effort to improve this tunnel through the incorporation of a commissioned art project with Van-Go. Over the past six months that project has become a reality with the official unveiling at the yearly Pinckney Elementary School event held May 3, 2013. (photos)

Ms. Skillman, Pinckney PTO, the Public Works Facility Division, Van-Go and other partnered to improve this tunnel, but more importantly enhance our community. I was impressed with the results of this effort. I think you will agree that the community has one more distinctive feature that makes us unique.



Deteriorated ceiling and peeling paint



Peeling paint and clogged drains





Graffiti



Graffiti



After cleanup, new paint and new lighting 2011





Completed south access ramps



*Tunnel south access point with warning sign*



Installation of murals



Installation of murals



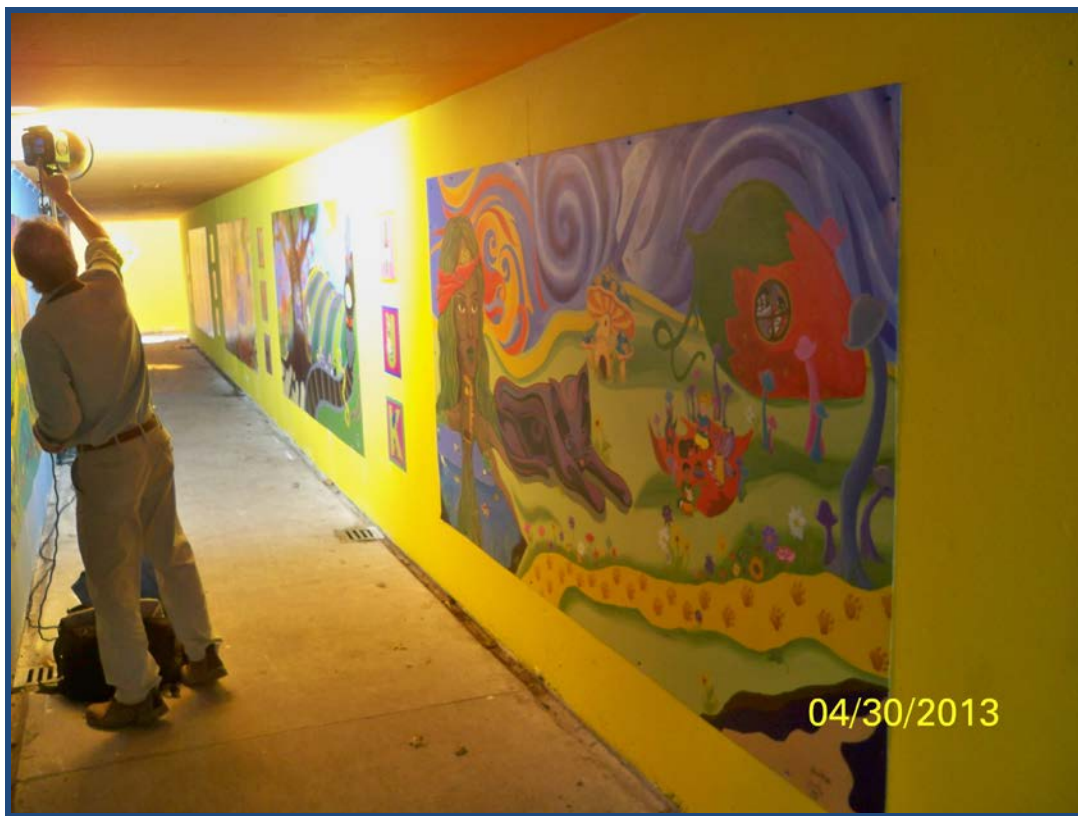


South tunnel access complete

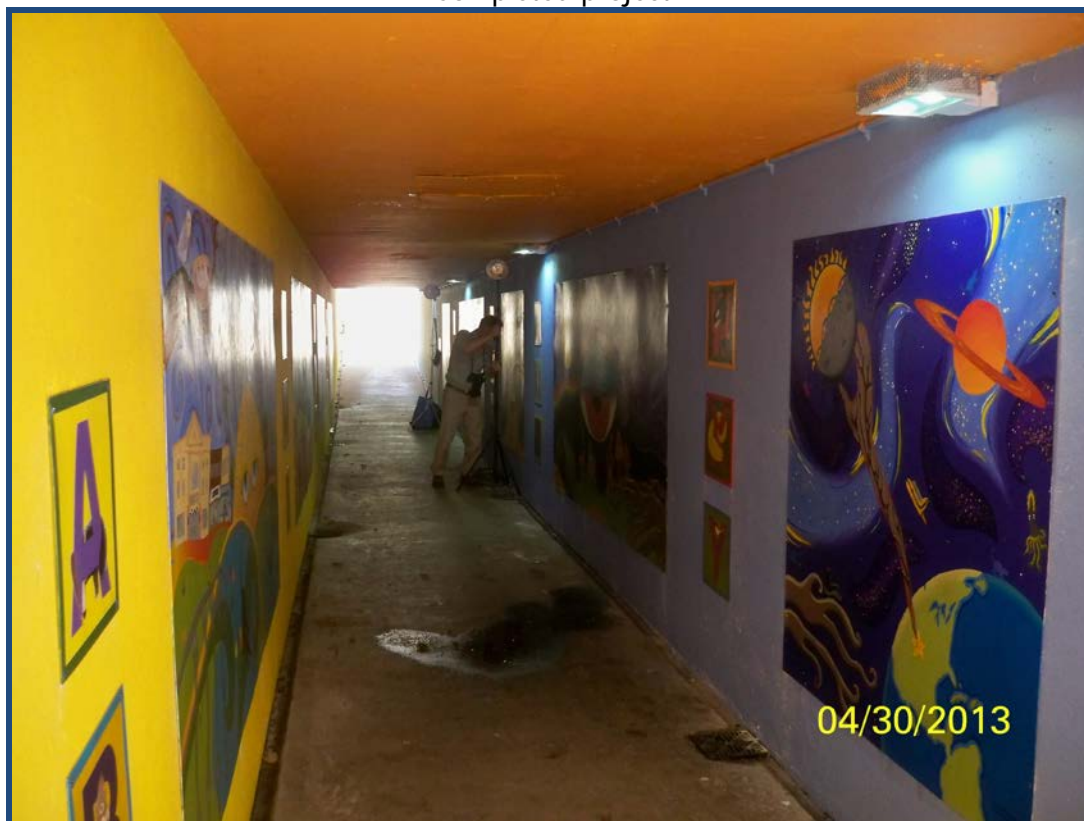


Starting point for mural theme





Completed project



Completed Project