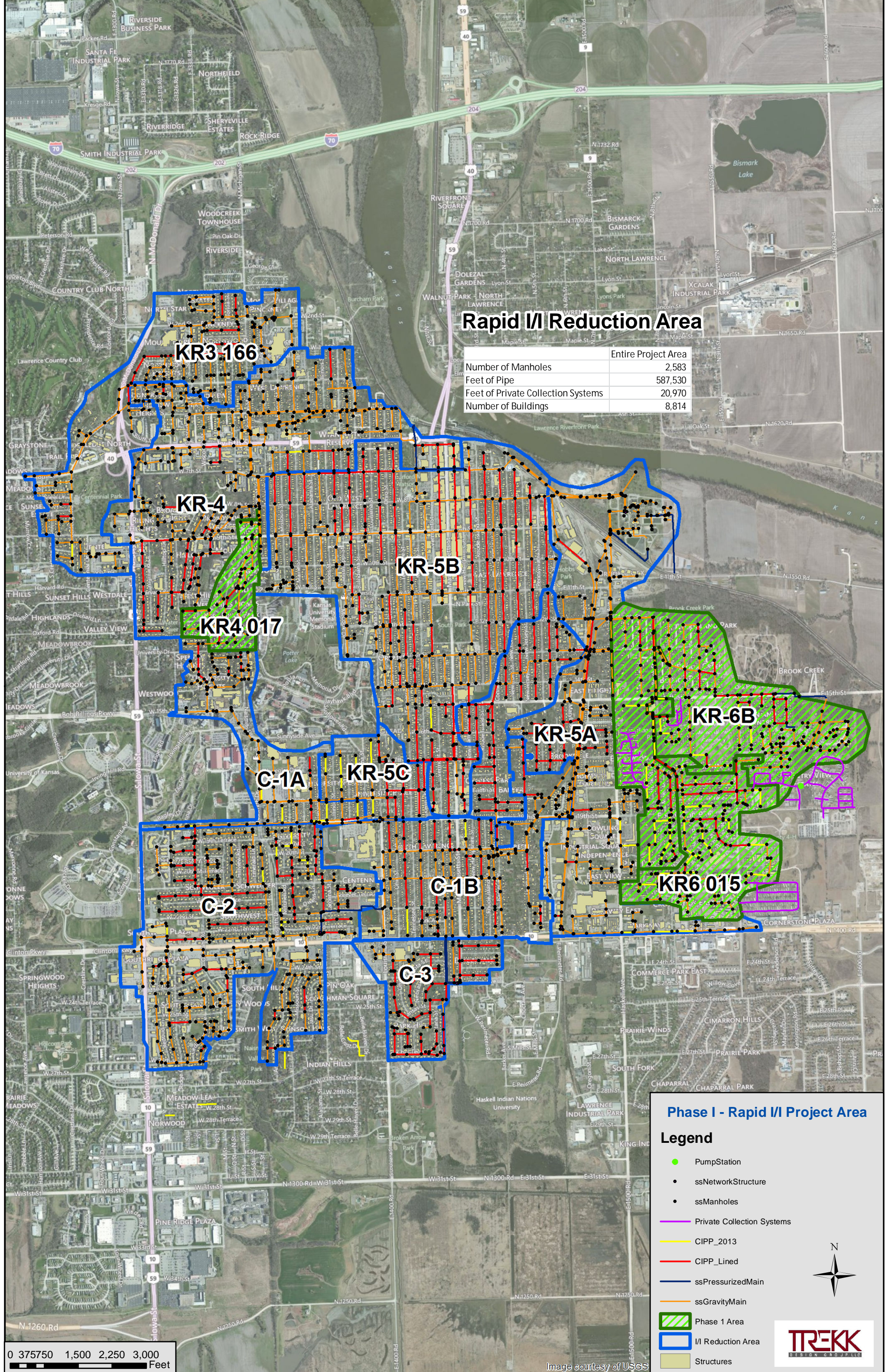


Rapid I/I Reduction Area

	Entire Project Area
Number of Manholes	2,583
Feet of Pipe	587,530
Feet of Private Collection Systems	20,970
Number of Buildings	8,814



Phase I - Rapid I/I Project Area

Legend

- PumpStation
- ssNetworkStructure
- ssManholes
- Private Collection Systems
- CIPP_2013
- CIPP_Lined
- ssPressurizedMain
- ssGravityMain
- Phase 1 Area
- I/I Reduction Area
- Structures

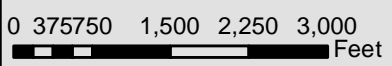


Image courtesy of USGS