

**AGENDA: TC 3/5/18**

ITEM NO. 8:

Stop Sign Request - 8th Street & Delaware Street

Action: Recommend denying request for a stop sign on 8th Street at Delaware Street

**MINUTES: TC 3/5/18**

ITEM NO. 8:

**Stop Sign Request – 8<sup>th</sup> St at Delaware St**

Staff Presentation:

Amanda Sahin presented the staff report on the stop sign request for 8<sup>th</sup> St at Delaware St.

Public Comment:

None

Transportation Commission:

Moved by Commissioner Bryan, seconded by Commissioner Hultine, to recommend denial of the stop sign request on 8<sup>th</sup> St at Delaware St.

The motion carried, 9-0.

# Memorandum

## City of Lawrence

### Public Works Department

TO: Transportation Commission  
FROM: Amanda Sahin, Transportation Engineer  
DATE: Feb 22, 2018  
RE: Agenda Item for Transportation Commission 3/5/2018: Stop Sign on 8<sup>th</sup> Street at Delaware Street

#### **Background**

In December 2017, staff received a request to install stop signs on 8<sup>th</sup> Street at Delaware Street. There is currently a stop sign with a "cross traffic does not stop" sign on Delaware Street. The "cross traffic does not stop" sign was added in November 2017 at the request of employees at the City wastewater treatment plant.

#### **Details**

Staff collected traffic data, reviewed crash history and visited the site take pictures.

- The traffic data shows that most of the traffic that enters the intersection either turns left on 8<sup>th</sup> Street from Delaware Street or turns south on Delaware Street from 8<sup>th</sup> Street. These two movements are not conflicting.
- Crash history was reviewed and shows one crash in the last two years. It was a single motorcycle crash that was attributed to speed.
- Adding stop signs on 8<sup>th</sup> is not feasible due to the proximity to the railroad tracks to the east.
- Removing the angled parking is not recommended due to the redevelopment of the area and the parking demand. The angled parking was used to achieve the required parking spaces for the 8<sup>th</sup> and Penn mixed use district.

#### **Action Request**

Staff recommends denying the request to install stop signs on 8<sup>th</sup> Street at Delaware.

#### **Attachments:**

Photos  
Traffic Data  
Request Email

Aerial photo



Stop Signs – 8<sup>th</sup> Street at Delaware Street

On Delaware Street looking west

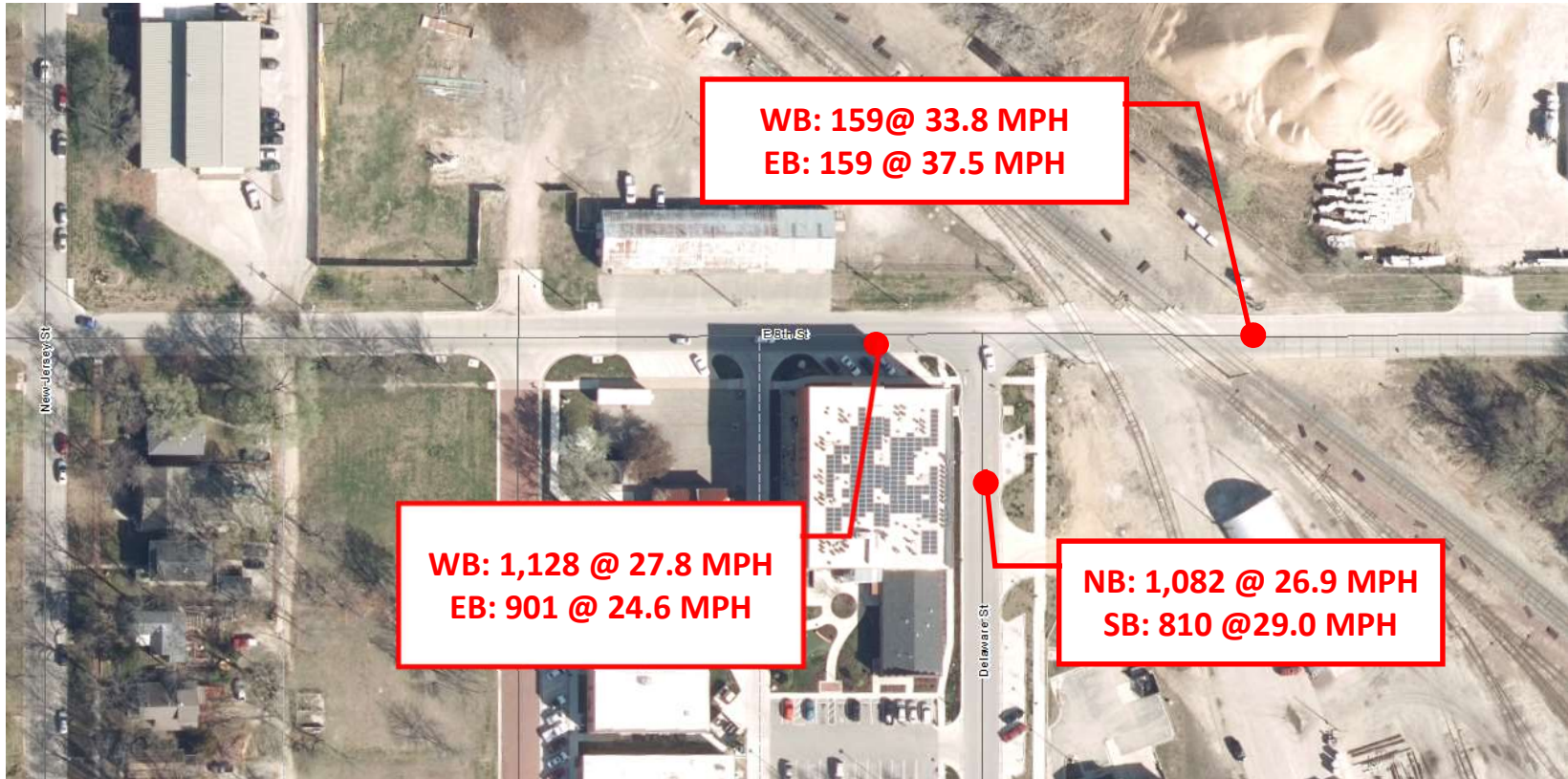


On 8<sup>th</sup> Street looking east



Stop Signs – 8<sup>th</sup> Street at Delaware Street

# 8<sup>th</sup> Street & Delaware Street Traffic Counts/Speed Data



Taken: 1:00 pm 12/12/17 to 1:00 pm 12/13/17

## Amanda Sahin

---

**From:** Brandon McGuire  
**Sent:** Friday, December 08, 2017 12:11 PM  
**To:** Charles Soules; David Cronin; Dave Wagner; Amanda Sahin  
**Cc:** Tom Markus  
**Subject:** Re: Intersection of 8th & Delaware

Chuck - please have your Engineering staff prepare a response. I think it's worth looking at the intersection. A lot of city employees and vehicles drove through it many times each day.

Brandon McGuire  
Assistant to the City Manager  
City of Lawrence, KS

Sent from my iPhone

On Dec 8, 2017, at 12:06 PM, Leslie Soden <[lsoden@lawrenceks.org](mailto:lsoden@lawrenceks.org)> wrote:

Thank you for the email Dan. I lived in the Poehler building for two years so I know exactly what you're talking about. I have copied staff for response on how we can make this intersection safer.

Mayor Leslie Soden  
913-890-3647

On Dec 8, 2017, at 11:40 AM, Dan Alexander <[dalexander@nekls.org](mailto:dalexander@nekls.org)> wrote:

Leslie,

I have been thinking about an intersection nearly 5 days a week for over the last year. I was reminded to speak up today when I realized how close, once again, I had come to being in a bad accident this morning.

Because of the large vehicles almost always parked in front of the Poehler Lofts building on 8th, it is very difficult to see if traffic is coming East on 8th Street when you are turning left from Delaware.

The vehicles that head East past Delaware on 8th are usually large and moving quickly, which seems like a recipe for bad collisions. It seems that this intersection should be looked at, perhaps adding a full stop before heading East past Delaware would be helpful, another option is to eliminate a few parking spaces on 8th near the corner of Delaware so there is a line of site.

I know that this route gets plenty of traffic and as more people are coming to the Arts District there is only more risk of danger. Personally, I really need to start taking New Jersey North across 8th to save me and my vehicle from danger on my morning commute.

I would be happy to illustrate my perspective further or if necessary make a public plea to the city to take a look at this traffic situation.

Thanks for reading,

Dan

--

Dan Alexander  
Northeast Kansas Library System,  
Director of Technology Support Services  
[dalexander@nekls.org](mailto:dalexander@nekls.org)  
[785-838-4090](tel:785-838-4090)  
[nekls.org](http://nekls.org)  
4317 West 6th Street  
Lawrence, KS 66049