

# Massachusetts St- 11<sup>th</sup> to 14<sup>th</sup> St Lane Reconfiguration



City of Lawrence  
PUBLIC WORKS

**Bartlett  
& West**

# Current Layout and Use

- ▶ Current road section is approximately 47' wide
- ▶ 2 lanes northbound, 1 southbound
- ▶ Parking is currently allowed (in travel lane) on the east side from 6 pm to 7 am and all day Sunday.
- ▶ Parking is allowed on the west side from North Park St to South Park St
- ▶ Bike route, bus route, and SRTS
- ▶ AADT of 12,300 vehicles/day



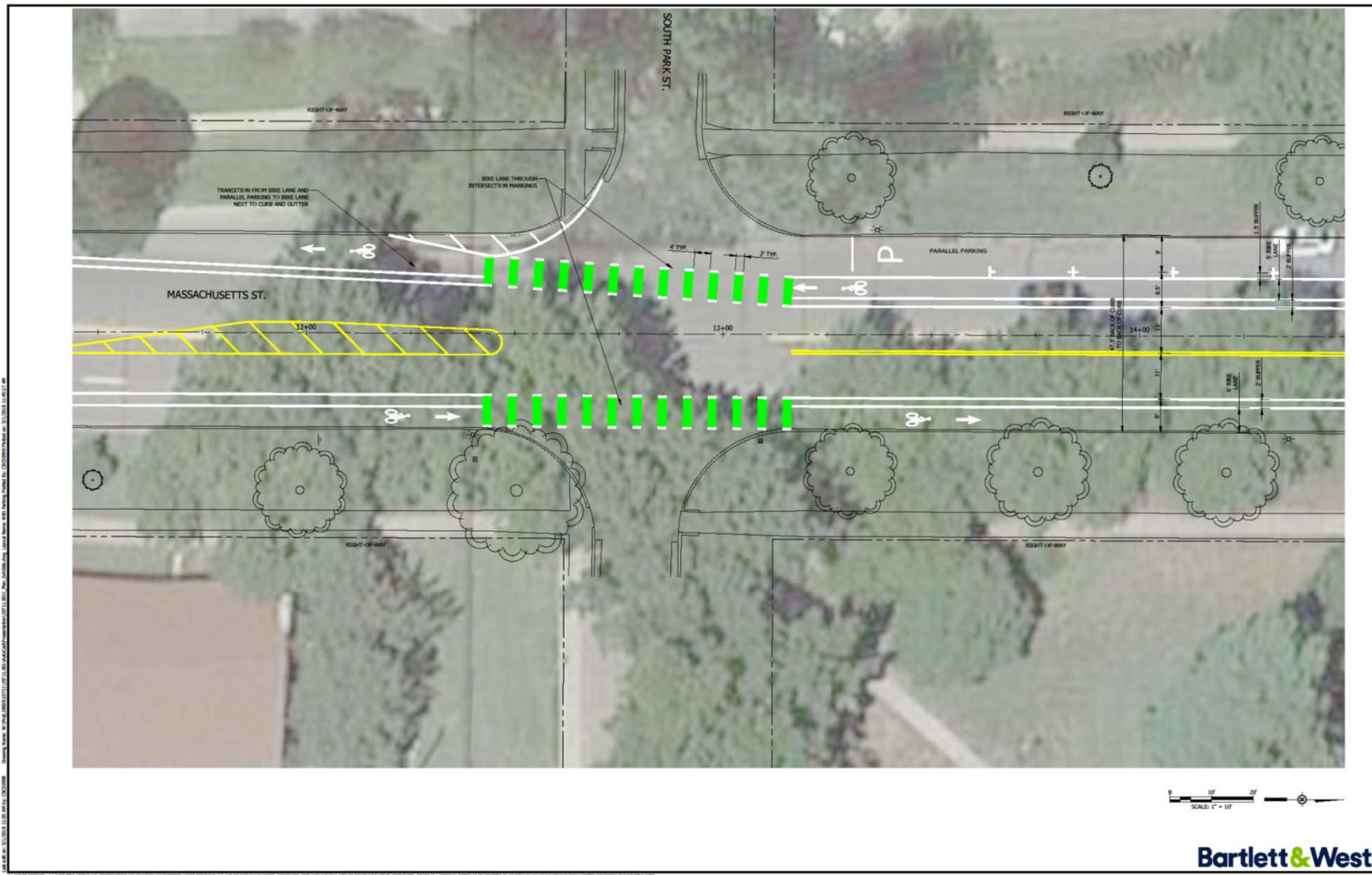
# Project Overview

- ▶ \$100,000 Federal-Aid Highway Safety Improvement Program (HSIP) Funds for a two-way left turn lane at 13<sup>th</sup> St and bike lanes from 11<sup>th</sup> to 14<sup>th</sup> St
- ▶ Mill and Overlay or patching and Microsurfacing will be incorporated as necessary based on road condition
- ▶ Eliminate one northbound travel lane and the parking on the east side
- ▶ Parking will remain on the west side from 11<sup>th</sup> St to South Park St
- ▶ Buffered bike lanes
- ▶ Bike box in southbound direction at 14<sup>th</sup> St
- ▶ Sharrows added northbound near North Park St
- ▶ Green pavement marking at street intersections to draw attention to the presence of the bike lane and identify potential conflict points





# Layout - South Park St Intersection



# Layout - North Park St Intersection

