

2003 LAWRENCE, KANSAS

OUTDOOR-DOWNTOWN
SCULPTURE EXHIBITION

16th
ANNUAL

The Lawrence Arts Commission welcomes you to the 16th Annual Downtown Lawrence Outdoor Sculpture Exhibition

The exhibition features eight original works from artists across the United States, which were selected from over 40 submissions. This year's exhibition was juried by Dr. Jan Schall, the Sanders Sosland Curator of Modern and Contemporary Art at the Nelson-Atkins Museum of Art in Kansas City, Missouri.

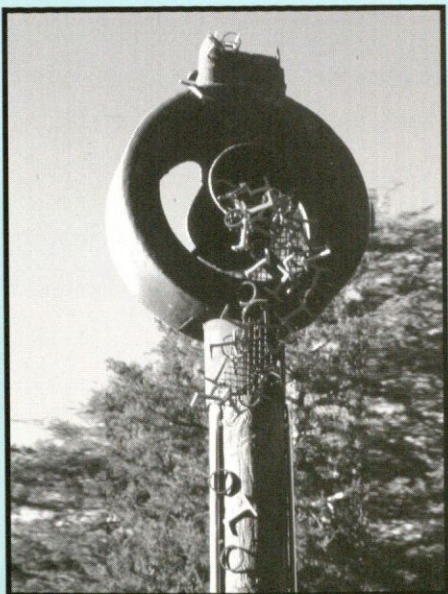
The exhibition is organized to enhance the understanding and appreciation of sculpture. This brochure is organized to assist a viewer's enjoyment of a self-guided tour of the exhibition.

The Lawrence Arts Commission appreciates the efforts of many organizations and individuals that assist with this annual exhibition and especially want to recognize the Lawrence Convention and Visitor Bureau, Jim Patti and City of Lawrence for their many contributions.

SCULPTURE LOCATIONS



↑
NORTH



1

"Digital Overload"

Myles Schachter

Lawrence, KS

Media: welded steel on a wood pole

Myles has been active in the arts for thirty years. For the past decade he has apprenticed with Elden Tefft working with bronze and stone works. In the past five years he has conducted the successful Stone Sculpting Workshop in Lawrence.

Myles has been active in the computer industry and uses technology daily. Myles, too, suffers from "Digital Overload". This eleven foot high piece consists of three components: the steel base, the pole and the top boiler.



2

"Falling Stars"

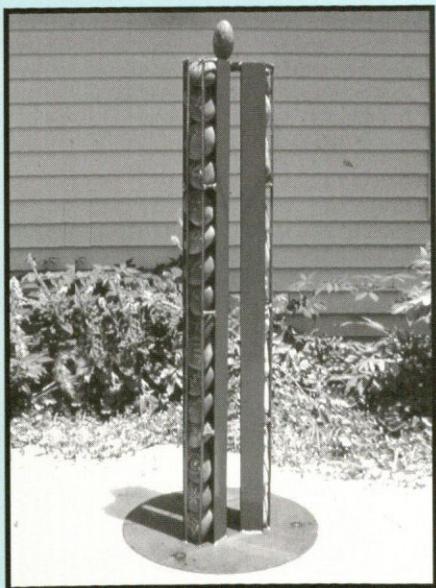
Tom Newport

Cedar Rapids, IA

Media: stainless steel

Tom has lived in Iowa all his life. He received a degree in art from Cornell College and has been pursuing sculpture and metalsmithing ever since. Tom's diverse knowledge of metalsmithing and stone carving techniques have allowed him to mix materials like stainless steel, titanium, and bronze together in many successful sculptures. This has added more color and light to the color and light reflecting pieces in stainless steel.

This piece is representative of the colors and abstract shapes which are left in the sky after a large fireworks shell has exploded. The sculpture flashes and plays with the light and colors from its surroundings.



3

"Mystic Tower"

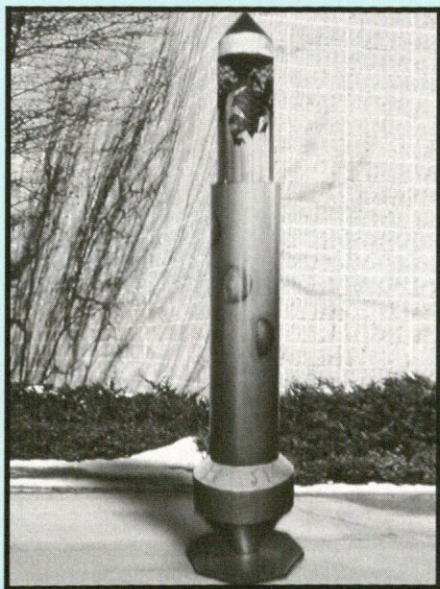
Donald Horseman

Fenton, MO

Media: steel/rocks

Donald studied at Washington University and received a B.F.A and Webster University in St. Louis, MO where he received an M.A.T.

Through the use of minimal but elegant forms, Donald offers a representation of texture, light, mass and translucent space. The end result is a deeper understanding of the natural relationships that occur in each person's private sensibilities, not unlike the stimulation of a symphony.



4

"Field Conductor"

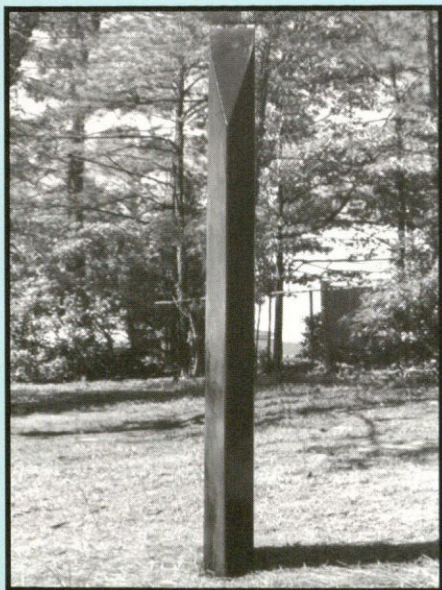
Bounnak Thammovong

Cedar Falls, IA

Media: steel

Bounnak was born in Vientiane, Laos. He received a BFA in Sculpture at the University of Northern Iowa. Currently he focuses upon large scale metal sculptures. Bounnak's pieces are based in strong geometry, but relate to elements found in his current surroundings.

"Field Conductor" is a steel tower. It is a piece based on agricultural architecture, and the relationship between the moon and crops, and references to my heritage. The upper section is based on a corncrib. It is a cylindrical form and is wrapped in the silhouette of corn leaves. The middle section has the phases of the moon sanded into the surface. The phases start out as a crescent moon near the base and are arranged in a spiral pattern that moves upward toward the top. At the top the final moon phase is a full moon. The base section has "dancing moon" written in Lao on it.



5

"Fulcrum of the Sun"

Carl R. Billingsley

Ayden, NC

Media: steel

Carl received an MFA from University of Wisconsin-Milwaukee in 1985. Currently he is Professor and Head of Sculpture at the School of Art-East Carolina University. His current work is abstract and uses materials as directly as possible. He is fundamentally a maker of objects. Carl enjoys making sculptures that are somewhat mysterious and that appear completely different from different view points. References, metaphors, associations and echoes of things seen are all within the work, awaiting discovery by the viewer.



6

"Quest"

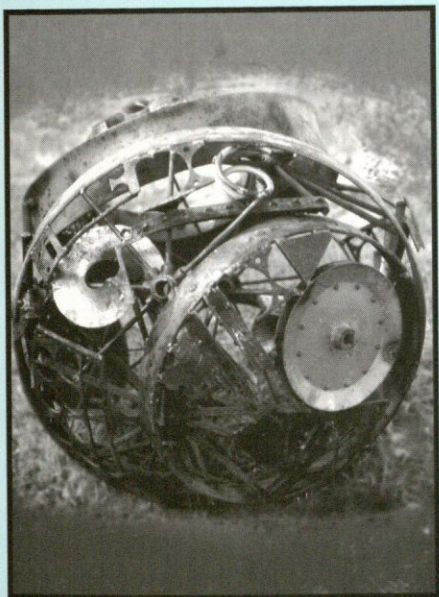
Andrew L. Arvanetes

Eules, TX

Media: Bronze

Andrew received his BFA and MFA from Northern Illinois University. He has been represented in the Chicago area by Sonia Zakz Gallery since 1990.

Andrew's sculptures reflect an ongoing fascination with man-made objects of great scale. These references to a new reality or scale enable the viewer to become a participant in the sculpture. Over time, the visual elements that Andrew uses have evolved into personal symbols and are key to the narrative of the sculpture. Each viewer appreciates these details in a different context based on their own personal experiences, thus creating a narrative of their own.



7

"Ferro Sphere #5"

Donald L. Dynneson

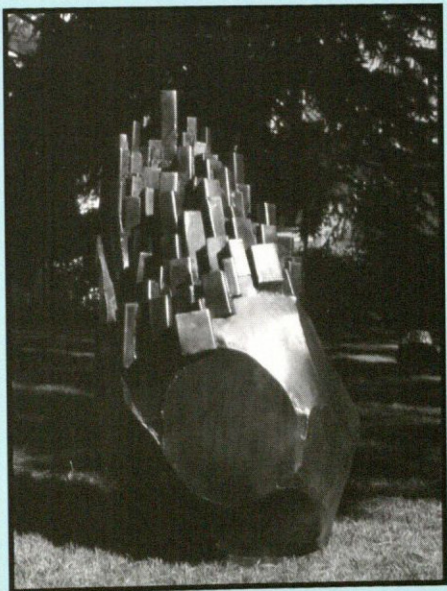
Seward, NE

Media: Welded Metal

Donald received his MFA and MA from University of Wyoming. He is currently retired after a 30 year career as Professor of Art at Concordia University in Seward, NE.

Man made spheres are usually small just as those found in nature. Gravity is a predominant reason for the limitation. On a cosmic scale there is a return to the sphere with the substance of each heavenly body arranged around its own gravitational core. Spheres of this size are uncommon.

By arranging selected metal parts this way I am forcing a cooperation of disparate personalities, each with its own history, into a kind of symphony of groupings. The spacing is loose enough to permit the parts on the distant surface to also visually interact.



8

"And you"

Chris Wubbona

Waterloo, IA

Media: steel

Chris is a professional sculptor presently teaching at the University of Northern Iowa, in Cedar Fall, Iowa. His work typically employs geology and stone stratification as metaphoric vehicles for investigation into the layers of sediment and sentiment that make up history, memory, and meaning.

"And you" exists as a fabricated steel sculpture that acts as a statement and a question concerning environmental degradation. This solitary rock form sits alone, but is engulfed with numerous shapes resembling the formation of crystals or a cityscape. The form, appearing to be slowly destroyed from the outside in, looks increasingly unbalanced with the weight of the emerging forms.

Anyone interested in purchasing a piece represented in this year's exhibition may call the office of the City Manager, (785) 832-3400, or visit the City Manager's office, fourth floor, City Hall, 6 E. 6th St.

City Manager: Mike Wildgen

City Commission:

David M. Dunfield, Mayor
Mike Rundle, Vice-Mayor
Dennis "Boog" Highberger
David Schauner
Sue Hack

Lawrence Arts Commission:

Lewis Tilford, Chair
William Carswell
Elizabeth Clark
DiAnne Damro
Shelley R. Davis
Kay Henry
Marlene Merrill
Jeff Ridgway
Dan Sabatini
Janet Satz
Linda Stone-Ferrier

Sponsored by:

Lawrence Arts Commission
The Kansas Sculptors Association
Lawrence Convention and Visitors Bureau
City of Lawrence

